

# **Report on Mobile Quality of Service in Thimphu Thromde**



**Bhutan InfoComm and Media Authority  
Royal Government of Bhutan**

**December 2022**

## Table of Contents

<b>Table of Contents</b>	<b>2</b>
<b>A. Background</b>	<b>3</b>
<b>B. Results</b>	<b>5</b>
1. Bebena area	5
2. BPC Colony Simtokha	7
3. Changjalu	9
4. Hejo	11
5. Jungshina	13
6. Olakha Workshop	15
7. Old BICMA Office Area	17
8. RIM	19
9. Semtokha Dzong	21
10. Bhutan Kitchen and Village Restaurant Babesa Area	23
11. Dr.Tobgay School area Babesa	25
12. Old Highway Babesa	27
13. Below Babesa Highway(Zimdra)	29
14. Lower Pamtsho	31
15. Upper Pamtsho 1	33
16. Upper Pamtsho 2	35
17. Lower Taba	37
18. Upper Taba	39
19. YHSS area	41
20. Lower Town	43
21. Upper Town	45
22. Vegetable Market	47
23. Kaja Throm	49
24. Changbangdu	51
25. Changzamtog	53
26. NPPF Colony	55
27. Changangkha (Housing,CMSS and RKPS)	57
28. Lower Motithang	59
29. Ministers' Colony (including the road above MHSS)	61
30. MoIC (including ministry areas, BTL and Kawajangsa)	63
31. Sangaygang (RITH, Motithang Takin Preserve)	65
32. Upper Motithang	67
33. Zilukha - Motithang Highway	69
<b>C. Findings</b>	<b>71</b>

## A. Background

The network QoS monitoring was carried out in the month of October and November, 2022 in different parts of Thimphu Thromde to obtain the precise QoS data. The areas were divided into smaller and separate areas to obtain more accuracy.

The monitoring was carried out during the peak hours (between 6PM to 9PM) of the day.

Sl. No	Name of the places
1.	Bebena
2.	BPC colony Simtokha
3.	Changjalu
4.	Hejo
5.	Jungshina
6.	Olakha Workshop
7.	Around White Tara Hotel (Old BICMA office area)
8.	RIM
9.	Simtokha Dzong
10.	Bhutan Kitchen and Village Restaurant Babesa
11.	Dr.Tobgay school area Babesa
12.	Old Highway Babesa
13.	Zimdra (Below Highway Babesa)
14.	Lower Pamtsho
15.	Upper Pamtsho 1
16.	Upper Pamtsho 2
17.	Lower Taba
18.	Upper Taba
19.	YHSS area
20.	Lower Town

21.	Upper Town
22.	Vegetable Market
23.	Kaja Throm
24.	Changbangdu
25.	Changzamtog
26.	NPPF colony
27.	Changangkha (Housing, CMSS and RKPS)
28.	Lower Motithang
29.	Ministers' Colony (including the road above MHSS)
30.	MoIC (including ministry areas, BTL and Kawajangsa)
31.	Sangaygang (RITH, Motithang Takin Preserve)
32.	Upper Motithang
33.	Zilukha - Motithang Highway

## B. Results

The findings of the drive test of operators are as shown below:

### 1. *Bebena area*

- *Mobile Voice Service*

Operator	Call Drop rate (<2%)	Mean Opinion Score (>= 3.5)	Call Fallback Setup Time (<= 9 Seconds)	Remarks
BTL	0	3.89	6.12	No issue
TICL	0	3.84	8.81	No issue

- *Data Throughputs (Mbps) (4G)*

Operators	File Transfer Protocol		Remarks
	Download (≥ 6 Mbps)	Upload (≥ 2 Mbps)	
<b>BTL</b>	10.44	17.96	No issue
<b>TICL</b>	19.73	11.55	No issue

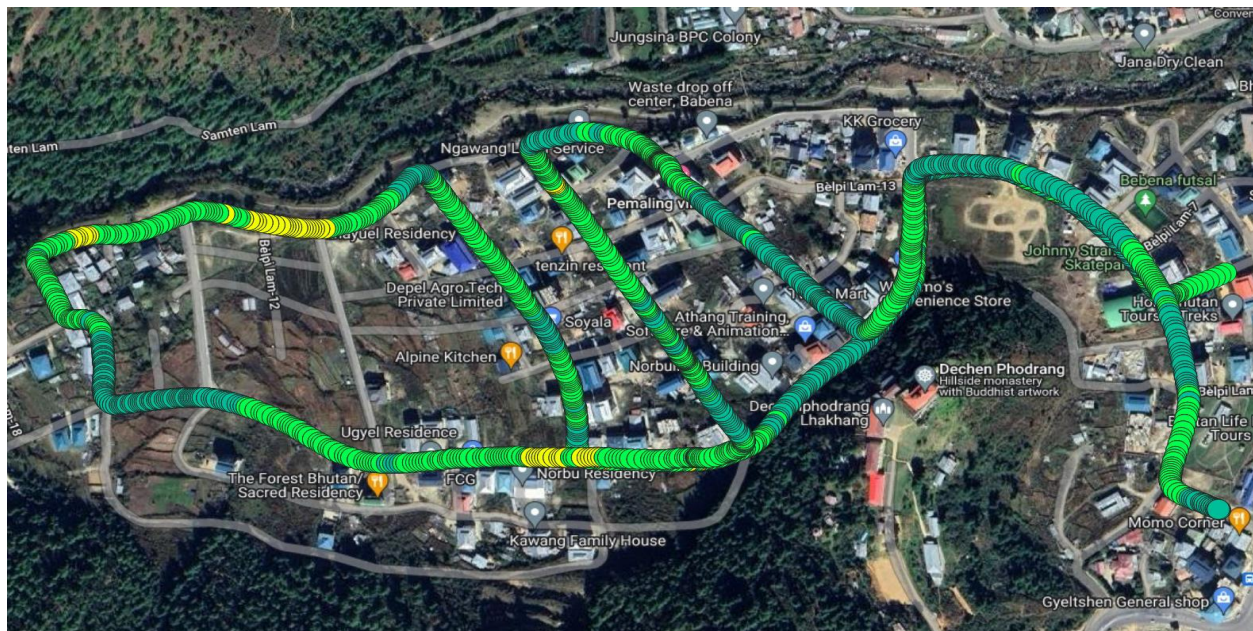
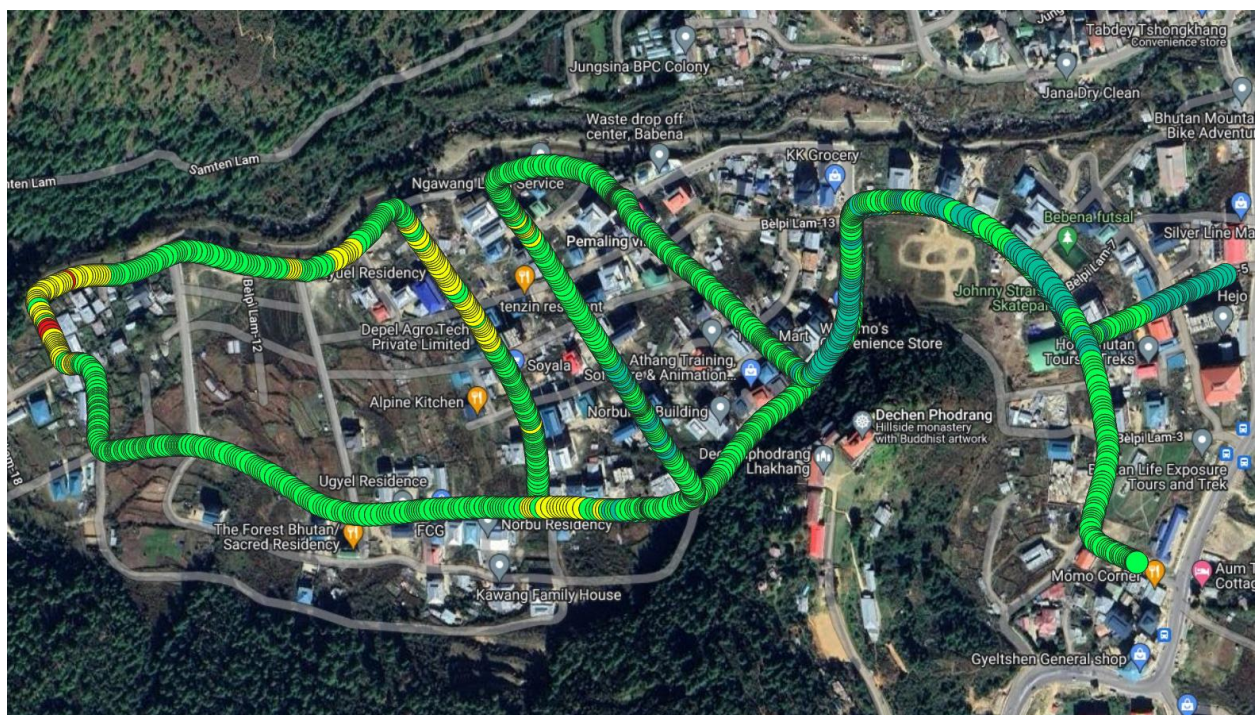


Figure number 1.1 : RSRP plot 4G B-mobile (QGIS) [Bebena]



## 2. BPC Colony Simtokha

- *Mobile Voice Service*

Operator	Call Drop rate (<2%)	Mean Opinion Score ( $\geq 3.5$ )	Call Fallback Setup Time ( $\leq 9$ Seconds)	Remarks
BTL	0	3.6	5.91	No issue
TICL	0	4.2	5.36	No issue

- *Data Throughputs (Mbps) (4G)*

Operators	File Transfer Protocol		Remarks
	Download ( $\geq 6$ Mbps)	Upload ( $\geq 2$ Mbps)	
BTL	20.74	25.26	No issue
TICL	11.99	17.13	No issue

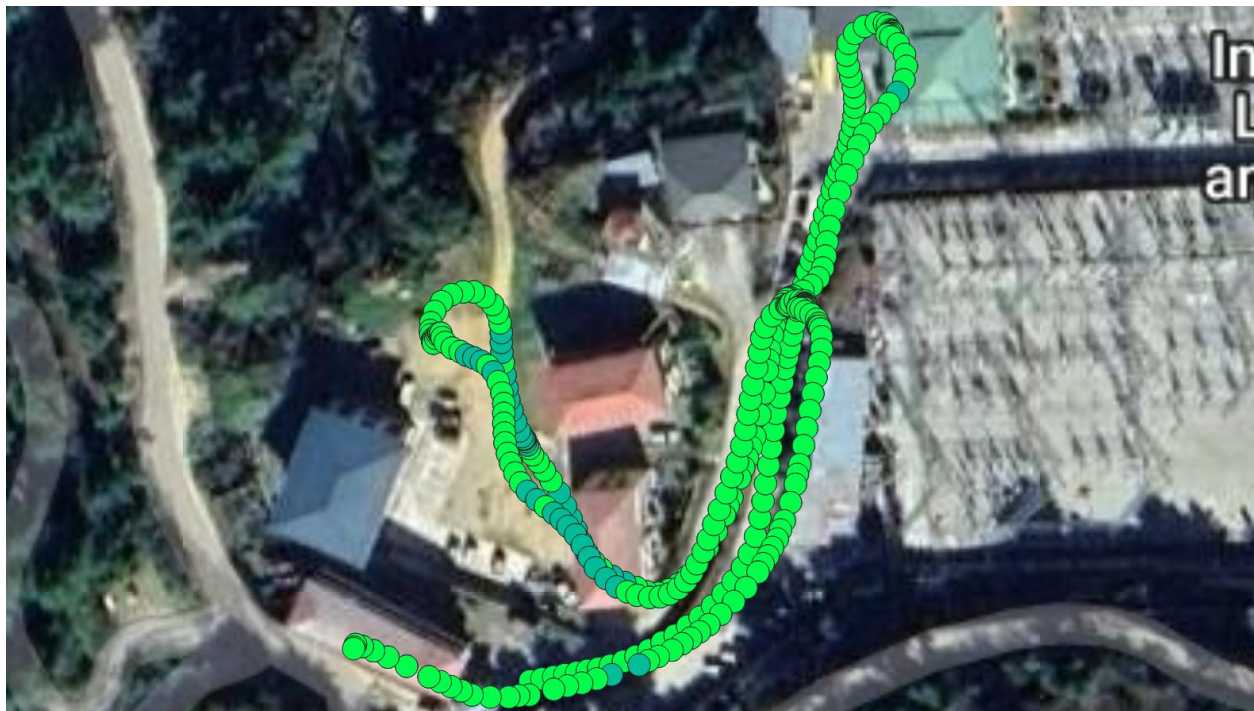


Figure number 2.1 : RSRP plot 4G B-mobile (QGIS) [BPC Colony Semtokha]



*Figure number 2.2 : RSRP plot 4G Tashi Cell (QGIS) [BPC Colony Simtokha]*

.....

### 3. Changjalu

- *Mobile Voice Service*

Operator	Call Drop rate (<2%)	Mean Opinion Score (>= 3.5)	Call Fallback Setup Time (<= 9 Seconds)	Remarks
BTL	0	3.75	6.16	No issue
TICL	0	4	7.87	No issue

- *Data Throughputs (Mbps) (4G)*

Operators	File Transfer Protocol		Remarks
	Download ( $\geq 6$ Mbps)	Upload ( $\geq 2$ Mbps)	
<b>BTL</b>	19.24	13.32	No issue
<b>TICL</b>	13.28	20.59	No issue



Figure number 3.1: RSRP plot 4G B-mobile (QGIS) [Changjalu]



*Figure number 3.2: RSRP plot 4G Tashi cell (QGIS) [Changjalu]*

#### 4. Hejo

- *Mobile Voice Service*

Operator	Call Drop rate (<2%)	Mean Opinion Score (>= 3.5)	Call Fallback Setup Time (<= 9 Seconds)	Remarks
BTL	0	3.89	7.22	No issue
TICL	0	4.03	6.29	No issue

- *Data Throughputs (Mbps) (4G)*

Operators	File Transfer Protocol		Remarks
	Download ( $\geq 6$ Mbps)	Upload ( $\geq 2$ Mbps)	
<b>BTL</b>	5.1	7.2	No issue
<b>TICL</b>	18.04	19.03	No issue



Figure number 4.1: RSRP plot 4G B-mobile (QGIS) [Hejo]



## 5. Jungshina

- *Mobile Voice Service*

Operator	Call Drop rate (<2%)	Mean Opinion Score (>= 3.5)	Call Fallback Setup Time (<= 9 Seconds)	Remarks
BTL	0	3.84	6.65	No issue
TICL	0	4.03	7.01	No issue

- *Data Throughputs (Mbps) (4G)*

Operators	File Transfer Protocol		Remarks
	Download ( $\geq 6$ Mbps)	Upload ( $\geq 2$ Mbps)	
<b>BTL</b>	16.21	19.61	No issue
<b>TICL</b>	24.93	28.27	No issue

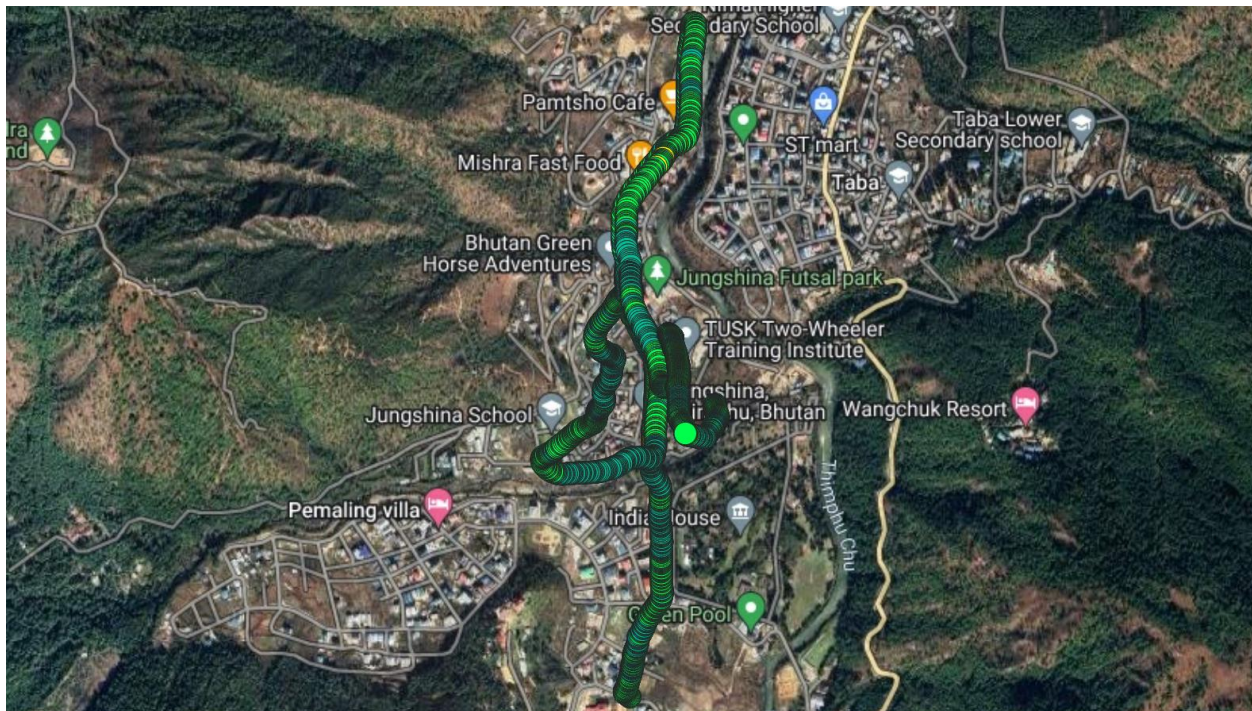


Figure number 5.1: RSRP plot 4G B-mobile (QGIS) [Jungshina]



*Figure number 5.2: RSRP plot 4G Tashi cell (QGIS) [Jungshina]*

## 6. Olakha Workshop

- *Mobile Voice Service*

Operator	Call Drop rate (<2%)	Mean Opinion Score (>= 3.5)	Call Fallback Setup Time (<= 9 Seconds)	Remarks
BTL	0	3.85	6.53	No issue
TICL	0	3.98	7.58	No issue

- *Data Throughputs (Mbps) (4G)*

Operators	File Transfer Protocol		Remarks
	Download (≥ 6 Mbps)	Upload (≥ 2 Mbps)	
BTL	9.9	17.31	No issue
TICL	22.56	22.39	No issue



Figure number 6.1: RSRP plot 4G B-mobile (QGIS) [Olakha Workshop]



## 7. Old BICMA Office Area

- *Mobile Voice Service*

Operator	Call Drop rate (<2%)	Mean Opinion Score (>= 3.5)	Call Fallback Setup Time (<= 9 Seconds)	Remarks
BTL	0	3.7	6.47	No issue
TICL	0	3.87	6.44	No issue

- *Data Throughputs (Mbps) (4G)*

Operators	File Transfer Protocol		Remarks
	Download ( $\geq 6$ Mbps)	Upload ( $\geq 2$ Mbps)	
BTL	17.61	13.51	No issue
TICL	9.3	13.26	No issue

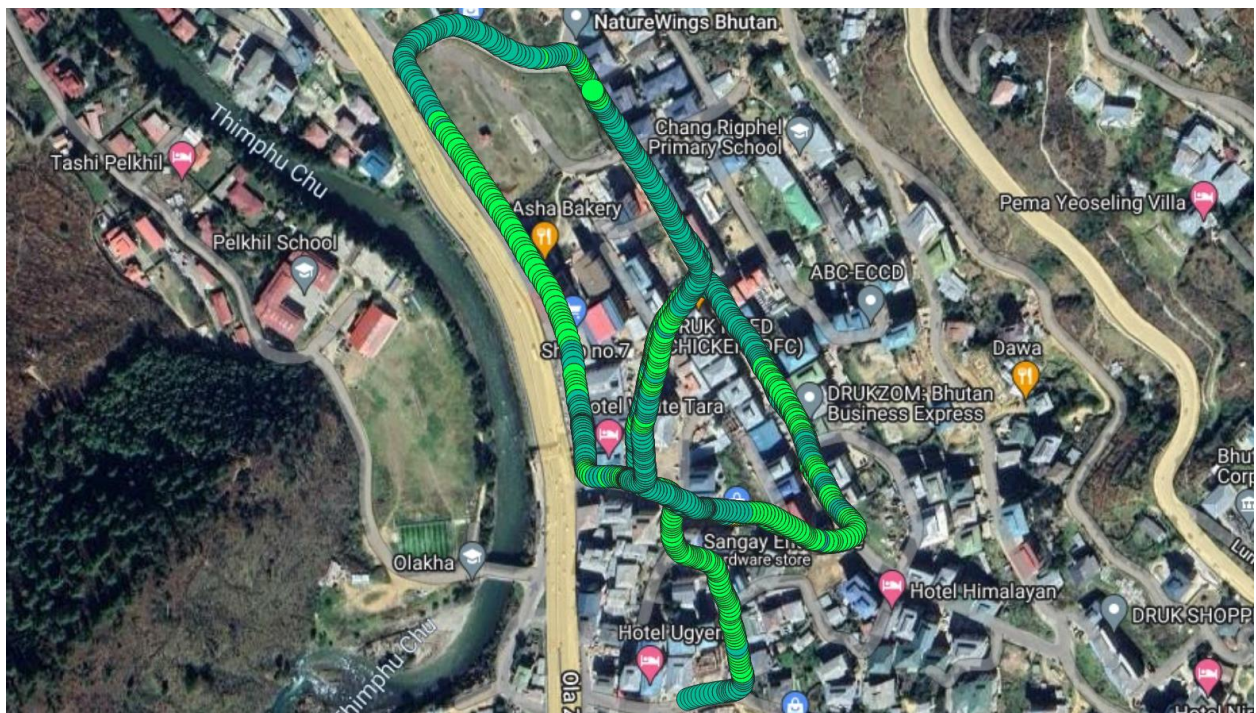
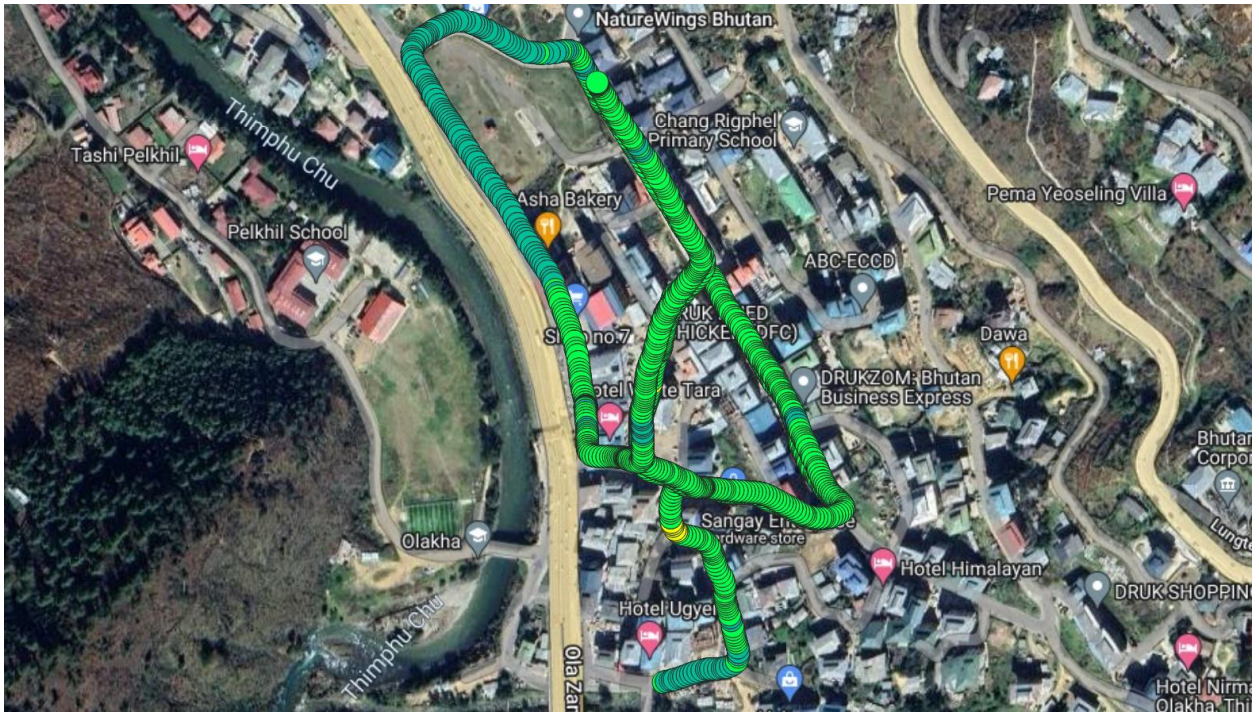


Figure number 7.1: RSRP plot 4G B-mobile (QGIS) [Old BICMA Office Area]



*Figure number 7.2: RSRP plot 4G Tashi cell (QGIS) [Old BICMA Office Area]*

## 8. RIM

- *Mobile Voice Service*

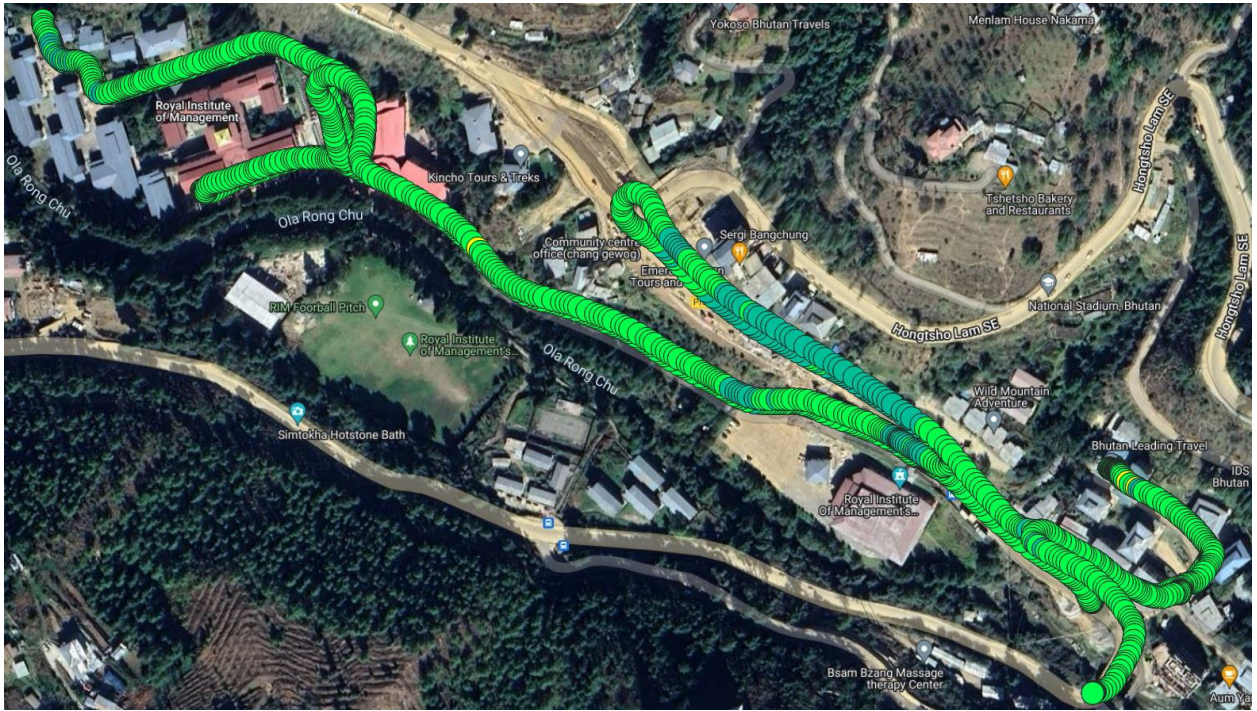
Operator	Call Drop rate (<2%)	Mean Opinion Score (>= 3.5)	Call Fallback Setup Time (<= 9 Seconds)	Remarks
BTL	0	3.88	5.97	No issue
TICL	0	3.81	6.19	No issue

- *Data Throughputs (Mbps) (4G)*

Operators	File Transfer Protocol		Remarks
	Download (≥ 6 Mbps)	Upload (≥ 2 Mbps)	
BTL	14.29	20.04	No issue
TICL	12.21	17.74	No issue



Figure number 8.1: RSRP plot 4G B-mobile (QGIS) [RIM]



*Figure number 8.2: RSRP plot 4G Tashi cell (QGIS) [RIM]*

## 9. Semtokha Dzong

- *Mobile Voice Service*

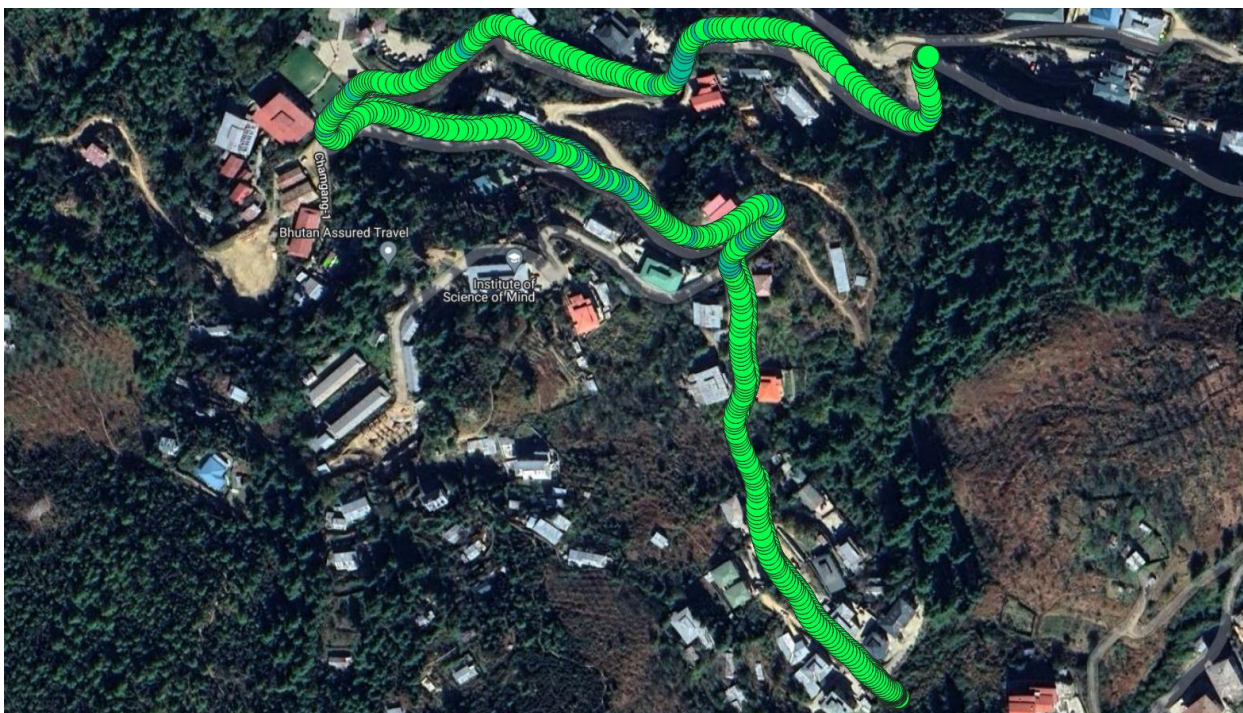
Operator	Call Drop rate (<2%)	Mean Opinion Score (>= 3.5)	Call Fallback Setup Time (<= 9 Seconds)	Remarks
BTL	0	3.86	5.68	No issue
TICL	0	4.09	5.89	No issue

- *Data Throughputs (Mbps) (4G)*

Operators	File Transfer Protocol		Remarks
	Download (≥ 6 Mbps)	Upload (≥ 2 Mbps)	
BTL	15.91	32.25	No issue
TICL	6.99	16.82	No issue



Figure number 9.1: RSRP plot 4G B-mobile (QGIS) [Semtokha Dzong]



*Figure number 9.2: RSRP plot 4G Tashi cell (QGIS) [Semtokha Dzong]*

.....

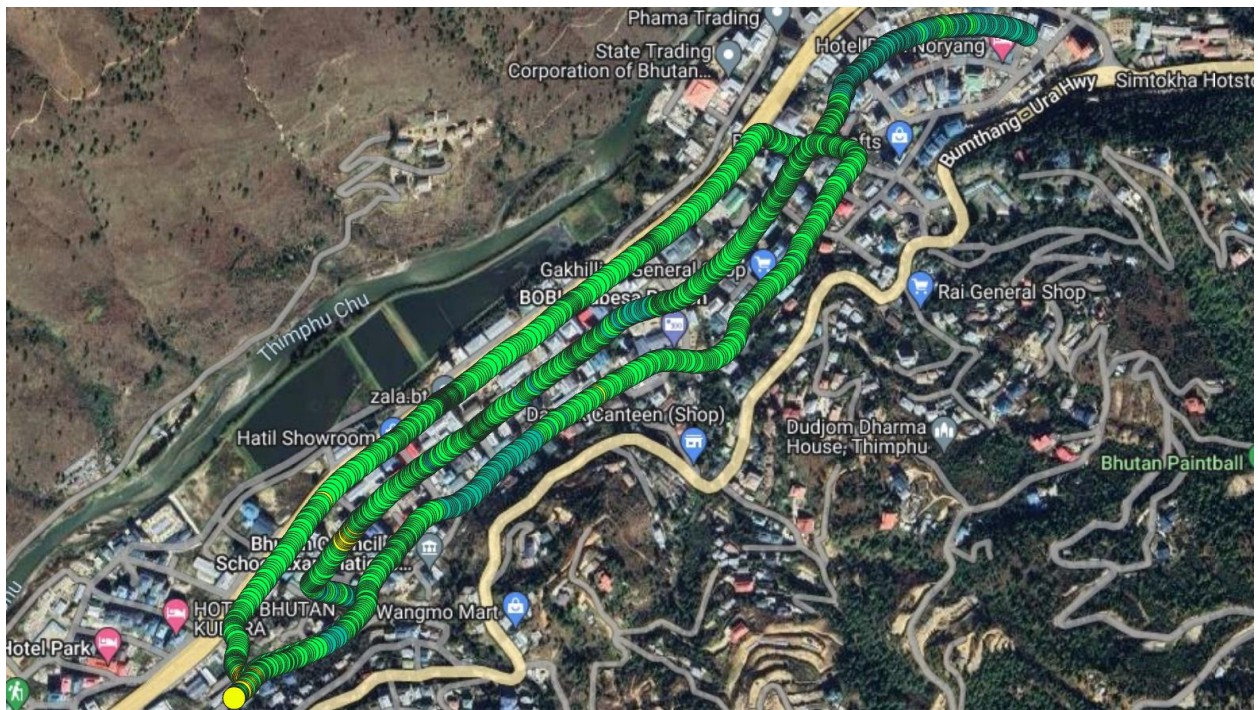
## 10. Bhutan Kitchen and Village Restaurant Babesa Area

- *Mobile Voice Service*

Operator	Call Drop rate (<2%)	Mean Opinion Score (>= 3.5)	Call Fallback Setup Time (<= 9 Seconds)	Remarks
BTL	0	3.82	7.05	No issue
TICL	0	3.75	<b>10.07</b>	<b>Issue with CFBST</b>

- *Data Throughputs (Mbps) (4G)*

Operators	File Transfer Protocol		Remarks
	Download (≥ 6 Mbps)	Upload (≥ 2 Mbps)	
<b>BTL</b>	16.04	16.75	No issue
<b>TICL</b>	11.87	17.470	No issue



*Figure number 10.1: RSRP plot 4G B-mobile (QGIS) [Bhutan Kitchen and Village Restaurant Babesa]*



*Figure number 10.2: RSRP plot 4G Tashi cell (QGIS) [Bhutan Kitchen and Village Restaurant Babesa]*

.....

## 11. Dr.Tobgay School area Babesa

- **Mobile Voice Service**

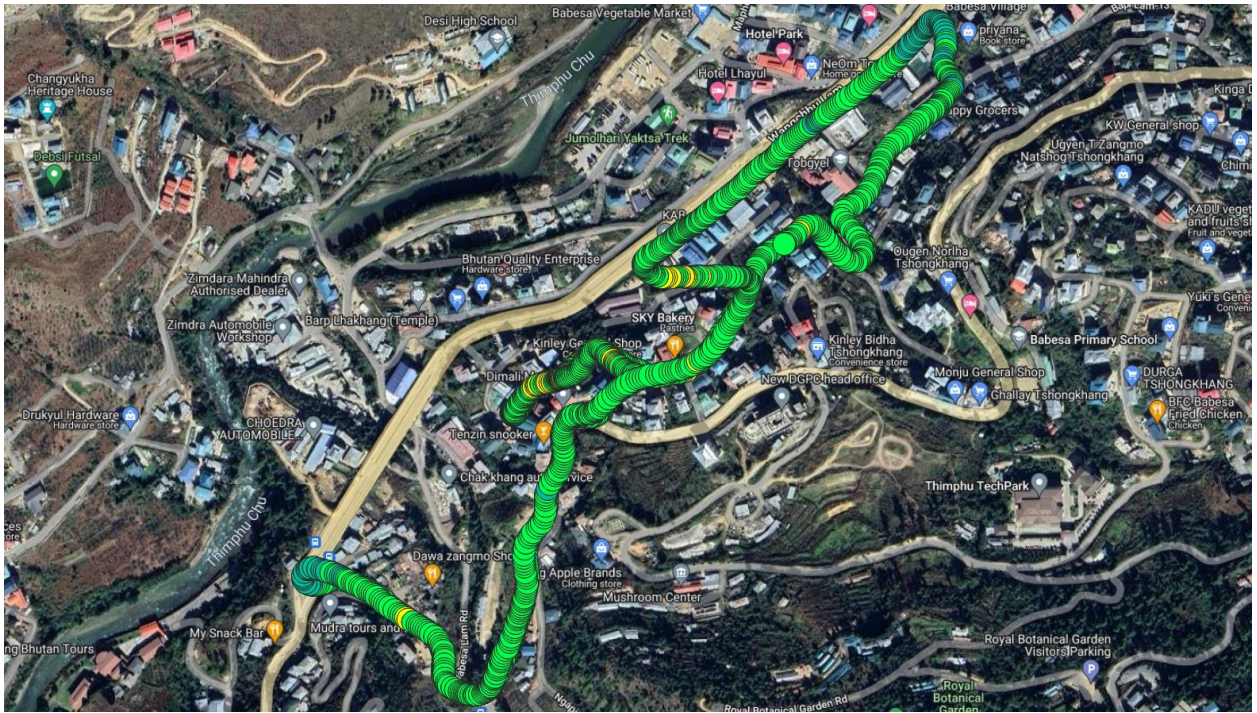
Operator	Call Drop rate (<2%)	Mean Opinion Score (>= 3.5)	Call Fallback Setup Time (<= 9 Seconds)	Remarks
BTL	0	3.75	6.99	No issue
TICL	0	3.58	6.08	No issue

- **Data Throughputs (Mbps) (4G)**

Operators	File Transfer Protocol		Remarks
	Download (≥ 6 Mbps)	Upload (≥ 2 Mbps)	
BTL	13.66	7.917	No issue
TICL	6.037	10.35	No issue



Figure number 11.1: RSRP plot 4G B-mobile (QGIS) [Dr.Tobgay School area Babesa]



*Figure number 11.2: RSRP plot 4G Tashi cell (QGIS) [Dr.Tobgay School area Babesa]*

## 12. Old Highway Babesa

- *Mobile Voice Service*

Operator	Call Drop rate (<2%)	Mean Opinion Score (>= 3.5)	Call Fallback Setup Time (<= 9 Seconds)	Remarks
BTL	0	3.63	9.27	Issue with CFBST
TICL	0	3.58	7.19	No issue

- *Data Throughputs (Mbps) (4G)*

Operators	File Transfer Protocol		Remarks
	Download (≥ 6 Mbps)	Upload (≥ 2 Mbps)	
BTL	14.764	14.059	No issue
TICL	8.051	10.524	No issue

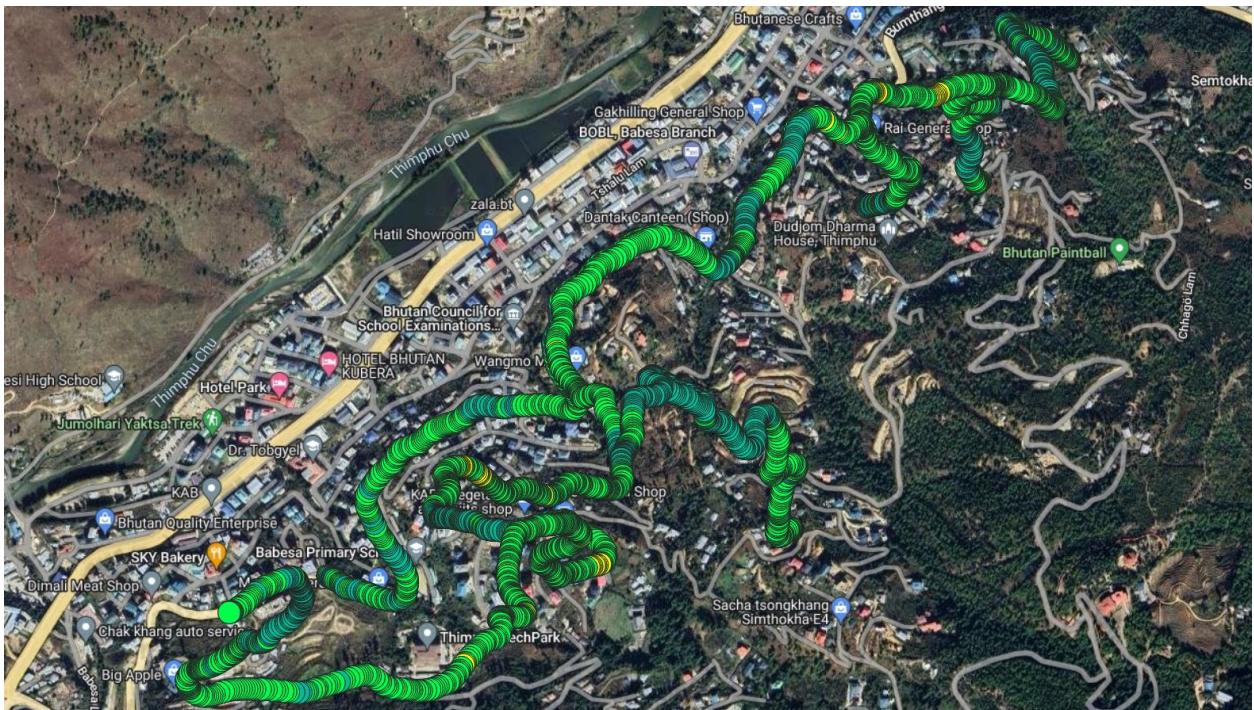
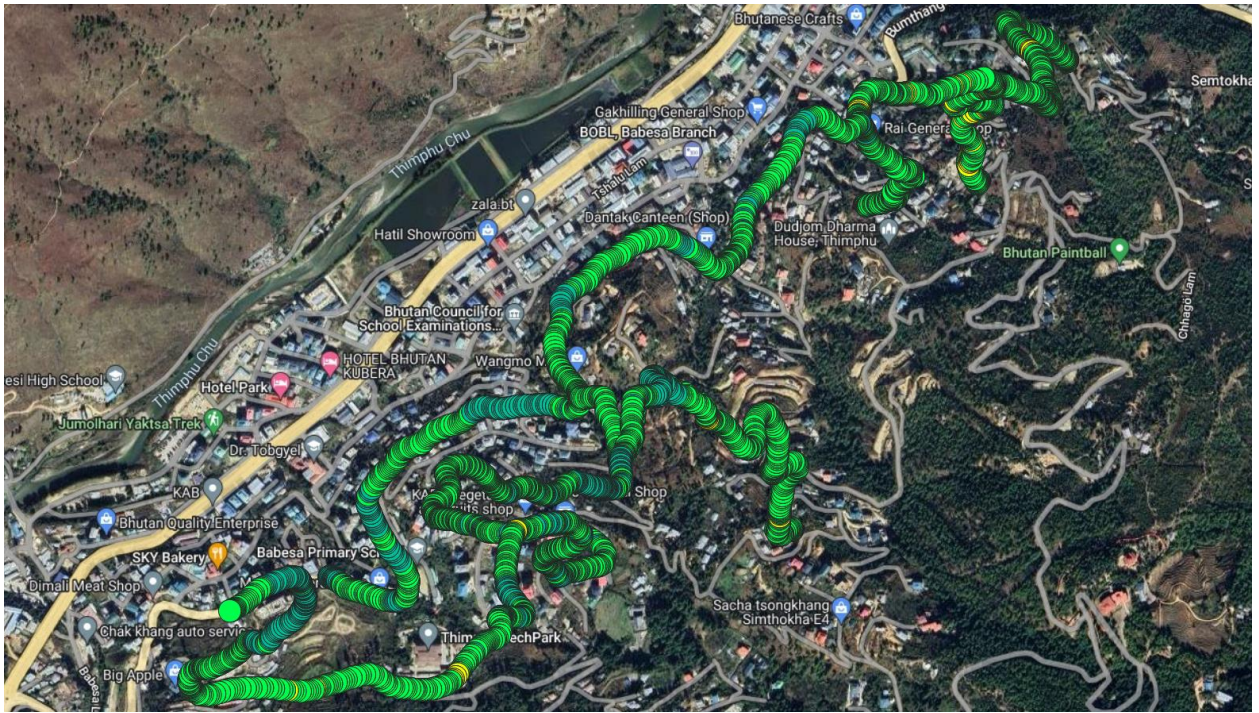


Figure number 12.1: RSRP plot 4G B-mobile (QGIS) [Old highway Babesa]



*Figure number 12.2: RSRP plot 4G Tashi cell (QGIS) [Old highway Babesa]*

### 13. Below Babesa Highway(Zimdra)

- **Mobile Voice Service**

Operator	Call Drop rate (<2%)	Mean Opinion Score (>= 3.5)	Call Fallback Setup Time (<= 9 Seconds)	Remarks
BTL	0	3.91	6.49	No issue
TICL	0	3.84	7.72	No issue

- **Data Throughputs (Mbps) (4G)**

Operato rs	File Transfer Protocol		Remarks
	Download ( $\geq 6$ Mbps)	Upload ( $\geq 2$ Mbps)	
<b>BTL</b>	20.554	9.714	No issue
<b>TICL</b>	11.059	14.758	No issue

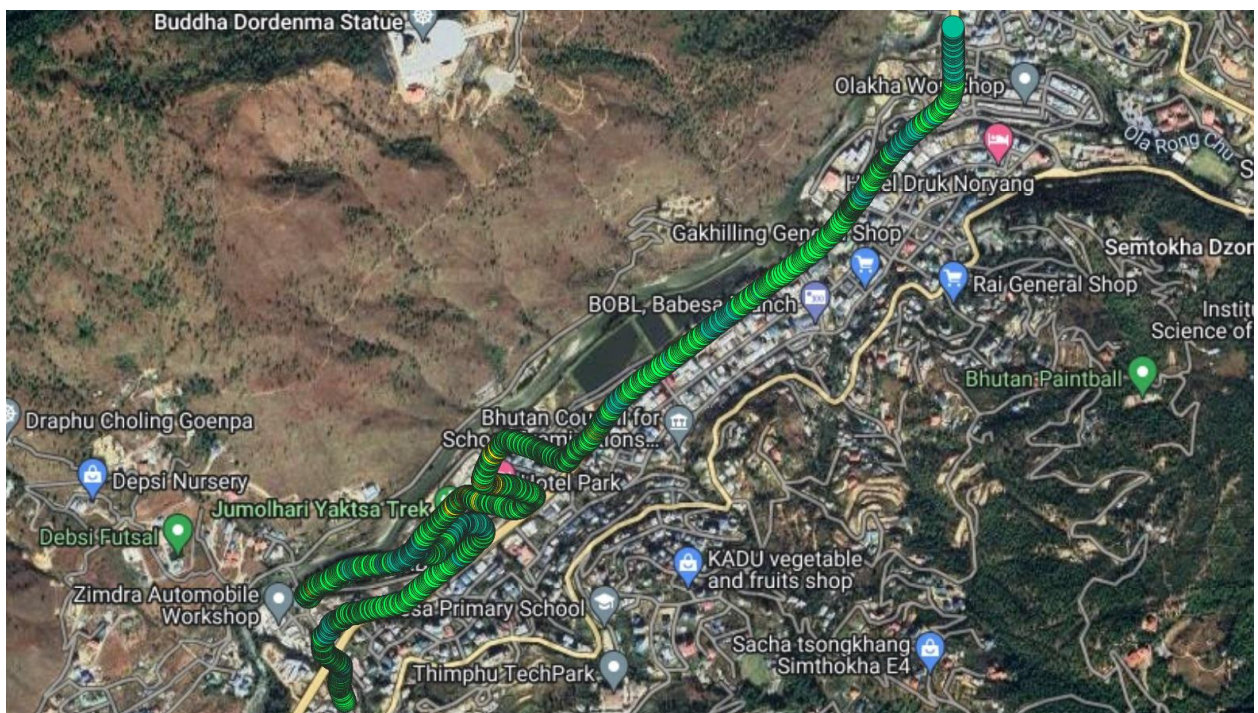


Figure number 13.1: RSRP plot 4G B-mobile (QGIS) [Below Babesa Highway(Zimdra)]



*Figure number 13.2: RSRP plot 4G Tashi cell (QGIS) [Below Babesa Highway(Zimdra)]*

#### 14. Lower Pamtsho

- **Mobile Voice Service**

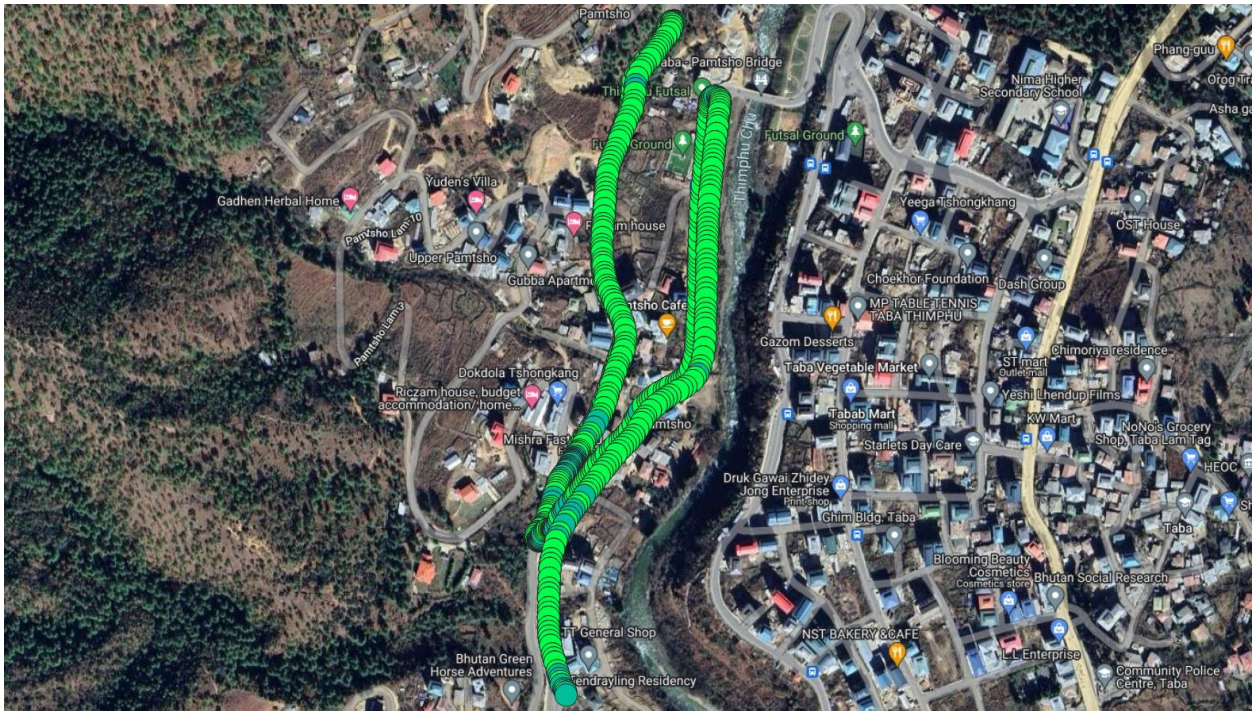
Operator	Call Drop rate (<2%)	Mean Opinion Score (>= 3.5)	Call Fallback Setup Time (<= 9 Seconds)	Remarks
BTL	0	3.77	5.92	No issue
TICL	0	4.89	7.49	No issue

- **Data Throughputs (Mbps) (4G)**

Operators	File Transfer Protocol		Remarks
	Download (≥ 6 Mbps)	Upload (≥ 2 Mbps)	
BTL	11.51	14.95	No issue
TICL	10.08	12.05	No issue



Figure number 14.1: RSRP plot 4G B-mobile (QGIS) [Lower Pamtsho]



*Figure number 14.2: RSRP plot 4G Tashi cell (QGIS) [Lower Pamtsho]*

## 15. Upper Pamtsho 1

- **Mobile Voice Service**

Operator	Call Drop rate (<2%)	Mean Opinion Score (>= 3.5)	Call Fallback Setup Time (<= 9 Seconds)	Remarks
BTL	0	3.34	5.26	Issue with MOS
TICL	0	3.74	13.06	Issue with CFBST

- **Data Throughputs (Mbps) (4G)**

Operators	File Transfer Protocol		Remarks
	Download (≥ 6 Mbps)	Upload (≥ 2 Mbps)	
BTL	31.74	19.39	No issue
TICL	4.2	11.28	Issue with DL throughput

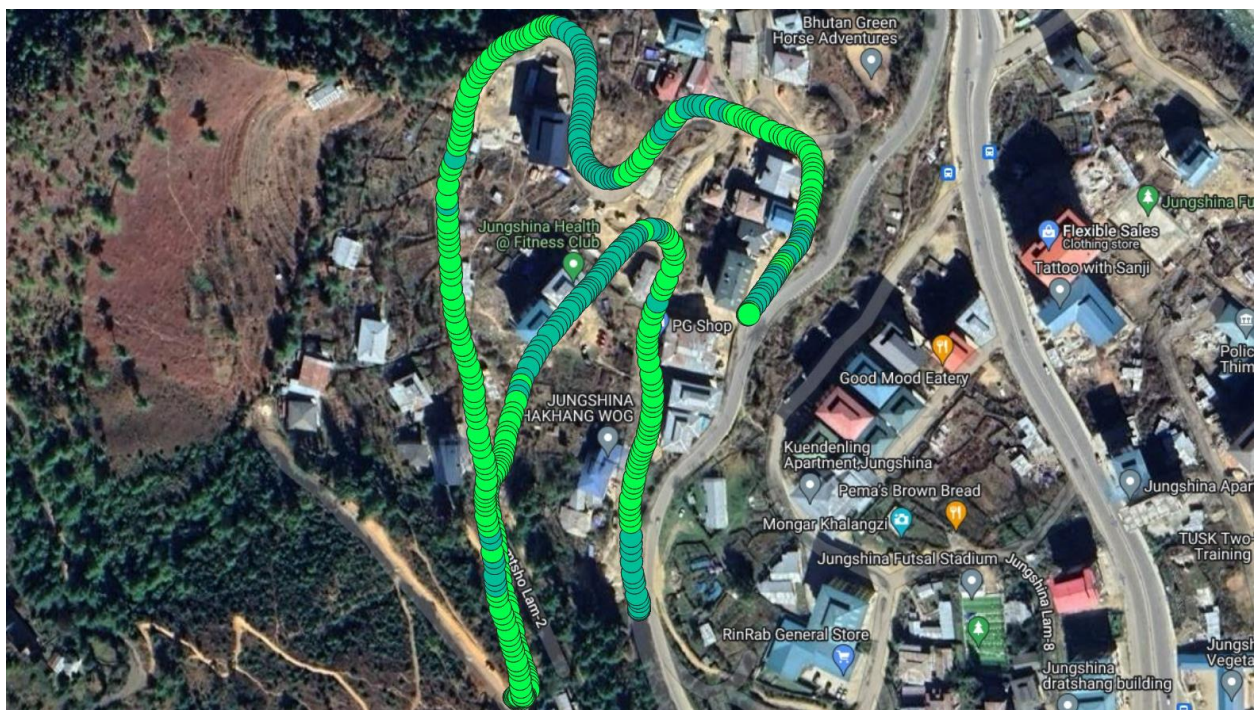


Figure number 15.1: RSRP plot 4G B-mobile (QGIS) [Upper Pamtsho 1]

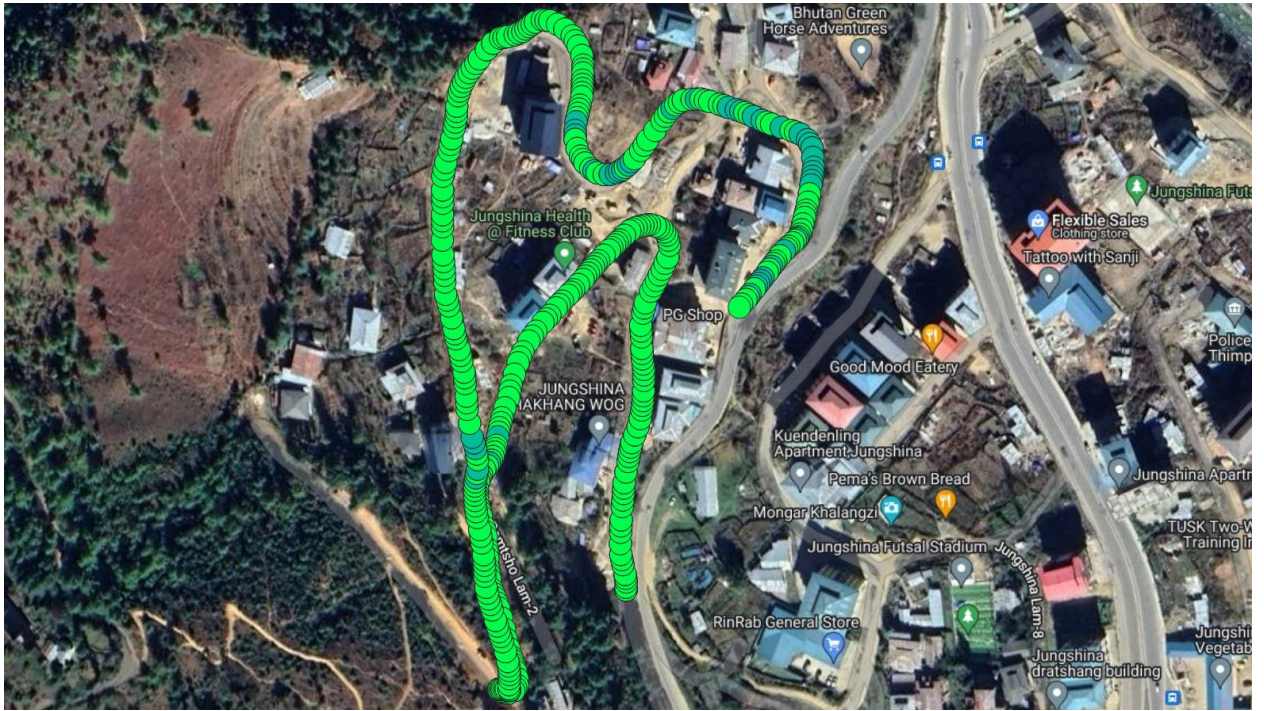


Figure number 15.2: RSRP plot 4G Tashi cell (QGIS) [Upper Pamtsho 1]

## 16. Upper Pamtsho 2

- **Mobile Voice Service**

Operator	Call Drop rate (<2%)	Mean Opinion Score (>= 3.5)	Call Fallback Setup Time (<= 9 Seconds)	Remarks
BTL	0	3.94	6.24	No issue
TICL	0	3.82	8.54	No issue

- **Data Throughputs (Mbps) (4G)**

Operators	File Transfer Protocol		Remarks
	Download (≥ 6 Mbps)	Upload (≥ 2 Mbps)	
<b>BTL</b>	7.42	12.12	No issue
<b>TICL</b>	12.15	17.15	No issue

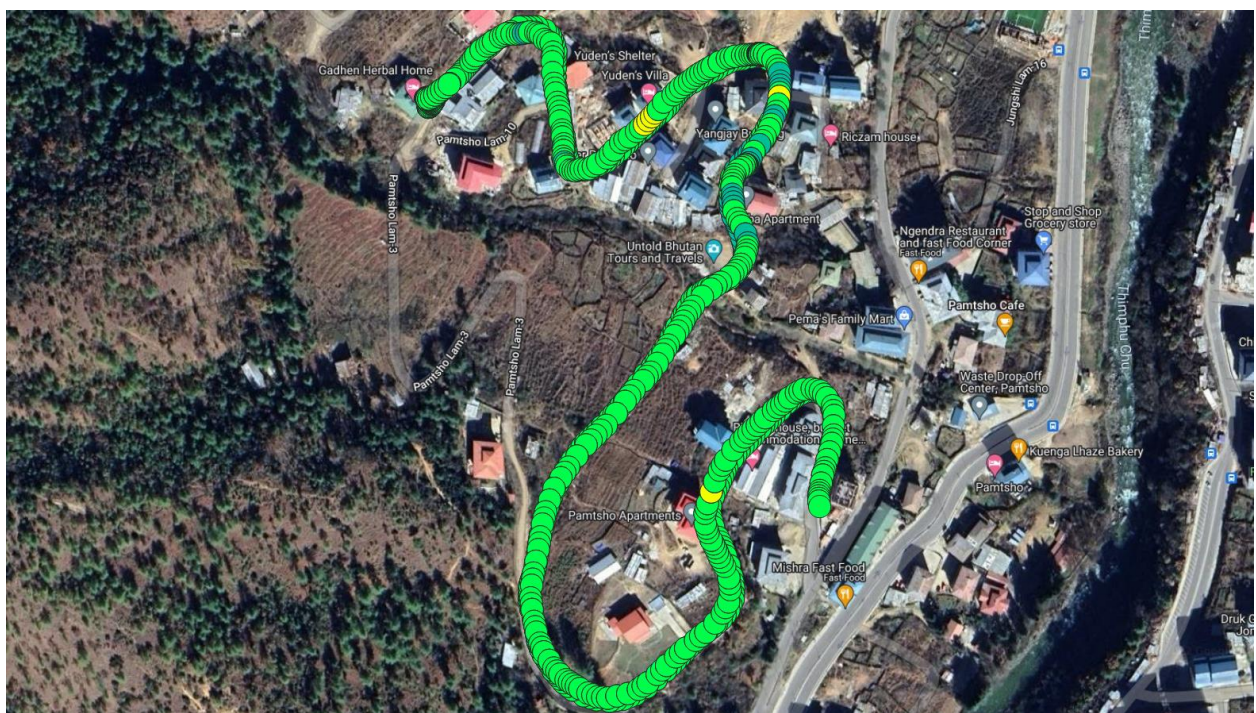


Figure number 16.1: RSRP plot 4G B-mobile (QGIS) [Upper Pamtsho 2]



## 17. Lower Taba

- **Mobile Voice Service**

Operator	Call Drop rate (<2%)	Mean Opinion Score (>= 3.5)	Call Fallback Setup Time (<= 9 Seconds)	Remarks
BTL	0	3.85	6.67	No issue
TICL	0	3.72	9.43	Issue with CFBST

- **Data Throughputs (Mbps) (4G)**

Operators	File Transfer Protocol		Remarks
	Download (≥ 6 Mbps)	Upload (≥ 2 Mbps)	
BTL	19.87	11.96	No issue
TICL	13.38	11.81	No issue

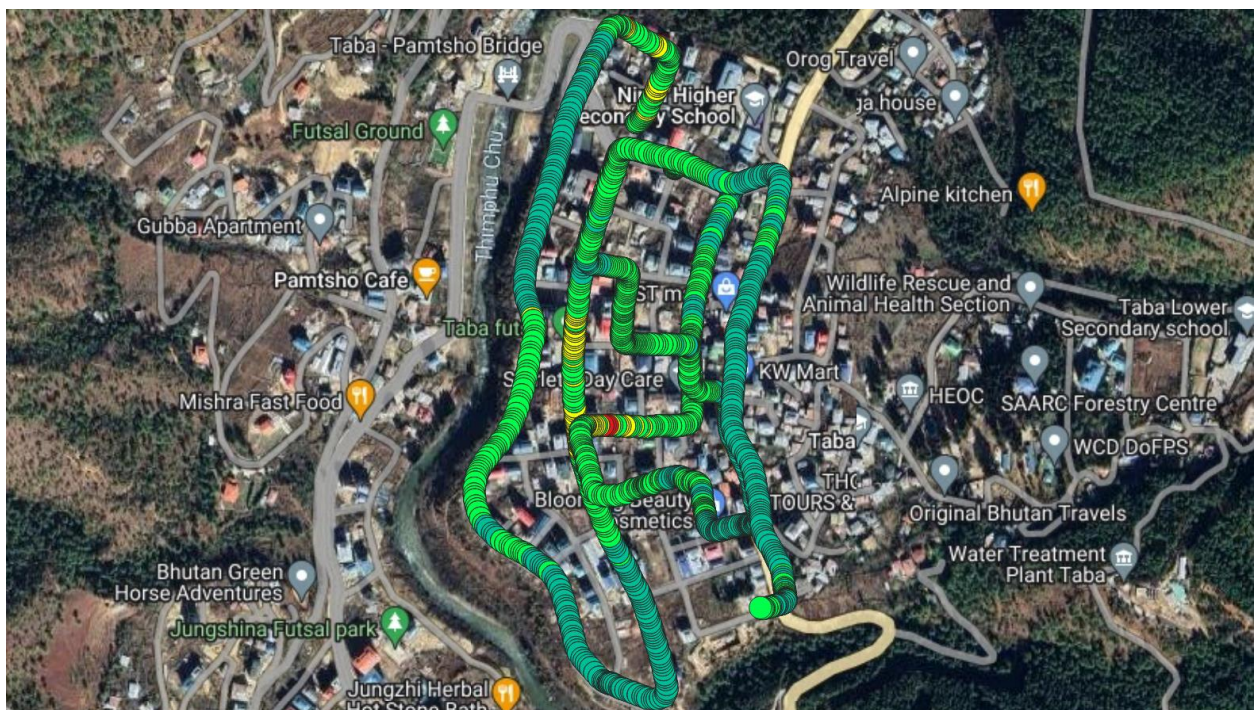
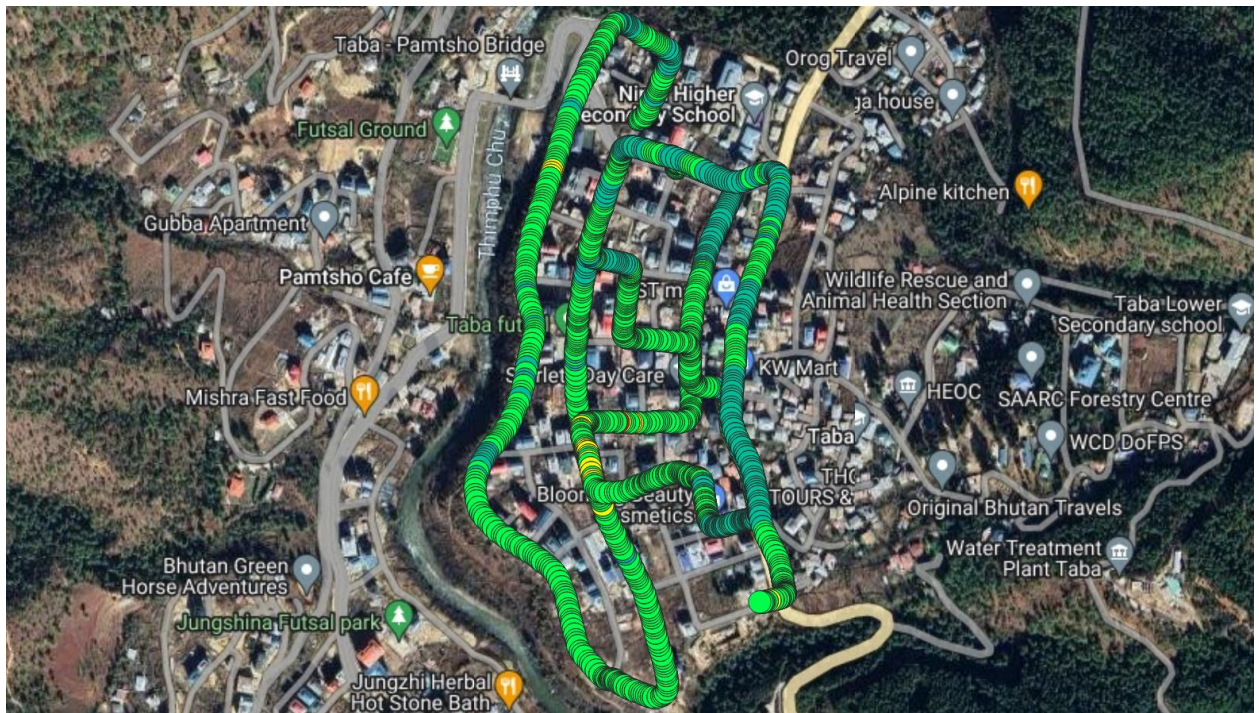


Figure number 17.1: RSRP plot 4G B-mobile (QGIS) [Lower Taba]



*Figure number 17.2: RSRP plot 4G Tashi cell (QGIS) [Lower Taba]*

## 18. Upper Taba

- **Mobile Voice Service**

Operator	Call Drop rate (<2%)	Mean Opinion Score (>= 3.5)	Call Fallback Setup Time (<= 9 Seconds)	Remarks
BTL	0	3.84	5.15	No issue
TICL	0	3.92	6.29	No issue

- **Data Throughputs (Mbps) (4G)**

Operators	File Transfer Protocol		Remarks
	Download (≥ 6 Mbps)	Upload (≥ 2 Mbps)	
<b>BTL</b>	32.39	15.815	No issue
<b>TICL</b>	20.77	21.18	No issue

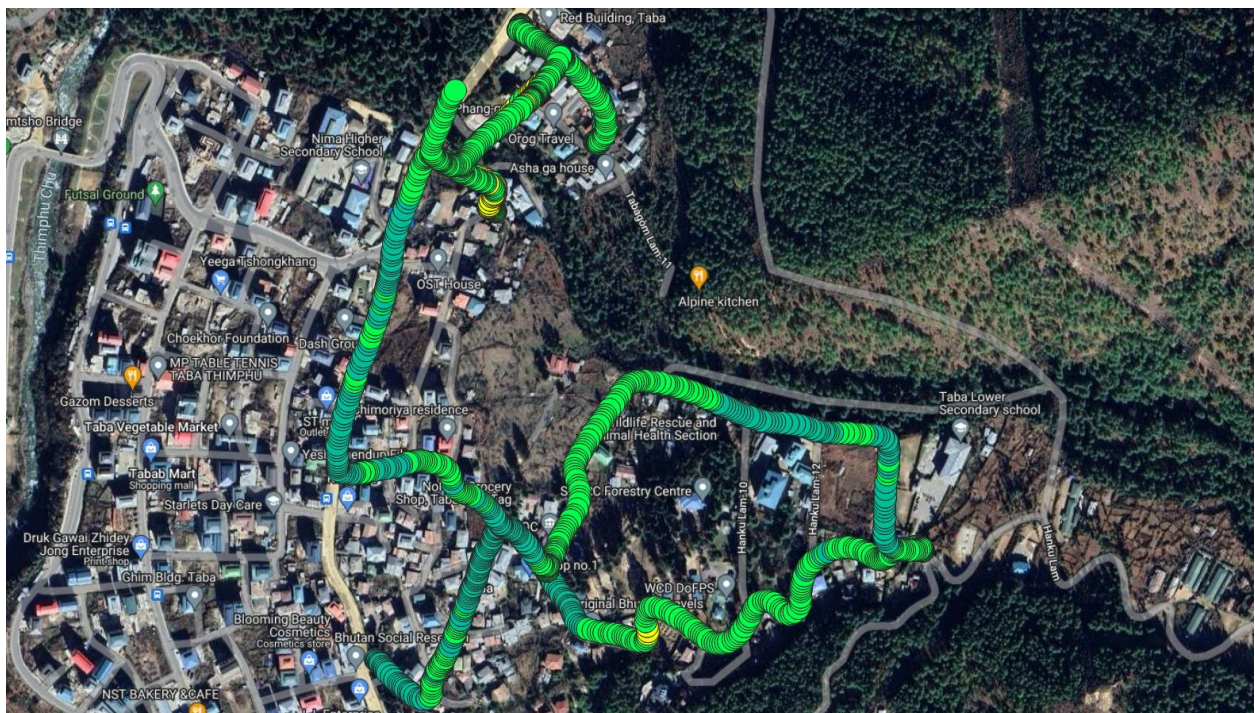


Figure number 18.1: RSRP plot 4G B-mobile (QGIS) [Upper Taba]



*Figure number 18.2: RSRP plot 4G Tashi cell (QGIS) [Upper Taba]*

## 19. YHSS area

- *Mobile Voice Service*

Operator	Call Drop rate (<2%)	Mean Opinion Score (>= 3.5)	Call Fallback Setup Time (<= 9 Seconds)	Remarks
BTL	0	3.83	7.15	No issue
TICL	0	3.61	11.51	Issue with CFBST

- *Data Throughputs (Mbps) (4G)*

Operators	File Transfer Protocol		Remarks
	Download ( $\geq 6$ Mbps)	Upload ( $\geq 2$ Mbps)	
BTL	3.17	6.01	Issue with DL throughput
TICL	2.61	4.53	Issue with DL throughput

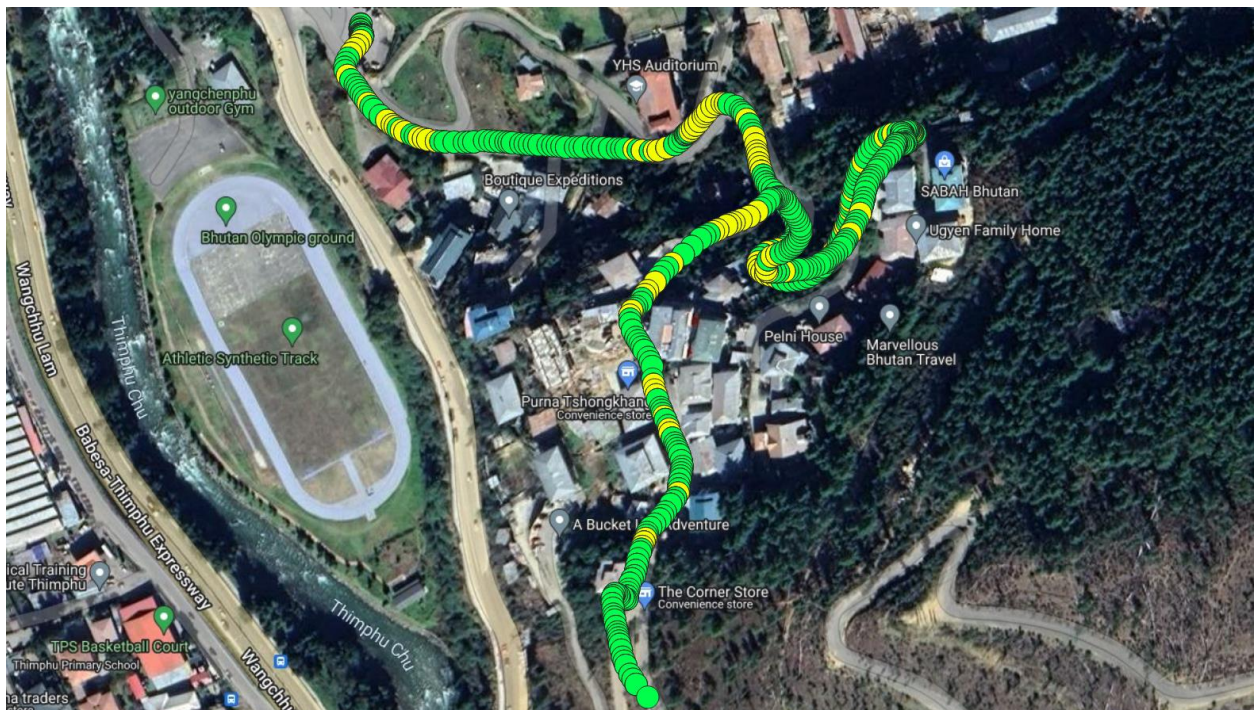


Figure number 19.1: RSRP plot 4G B-mobile (QGIS) [YHSS area]



Figure number 19.2: RSRP plot 4G Tashi cell (QGIS) [YHSS area]

## 20. Lower Town

- *Mobile Voice Service*

Operator	Call Drop rate (<2%)	Mean Opinion Score (>= 3.5)	Call Fallback Setup Time (<= 9 Seconds)	Remarks
BTL	0	3.89	6.34	No issue
TICL	0	3.80	6.96	No issue

- *Data Throughputs (Mbps) (4G)*

Operators	File Transfer Protocol		Remarks
	Download (≥ 6 Mbps)	Upload (≥ 2 Mbps)	
BTL	21.7	20.7	No issue
TICL	17.3	25.3	No issue

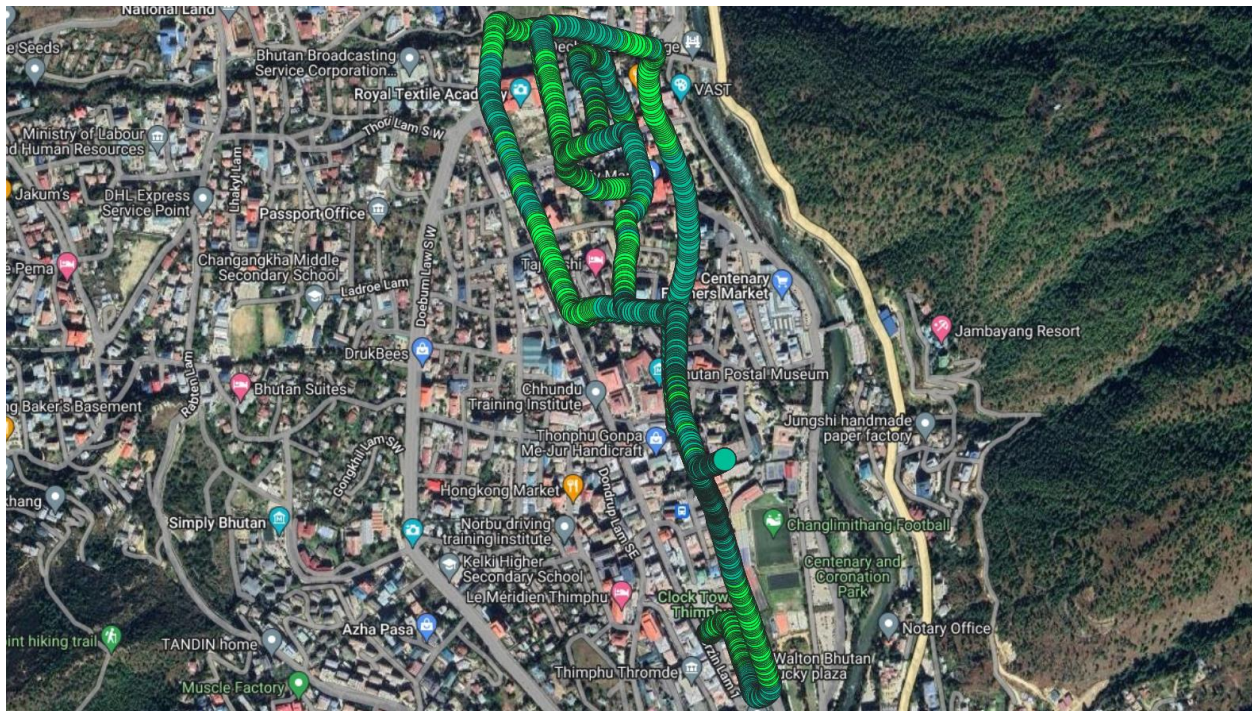
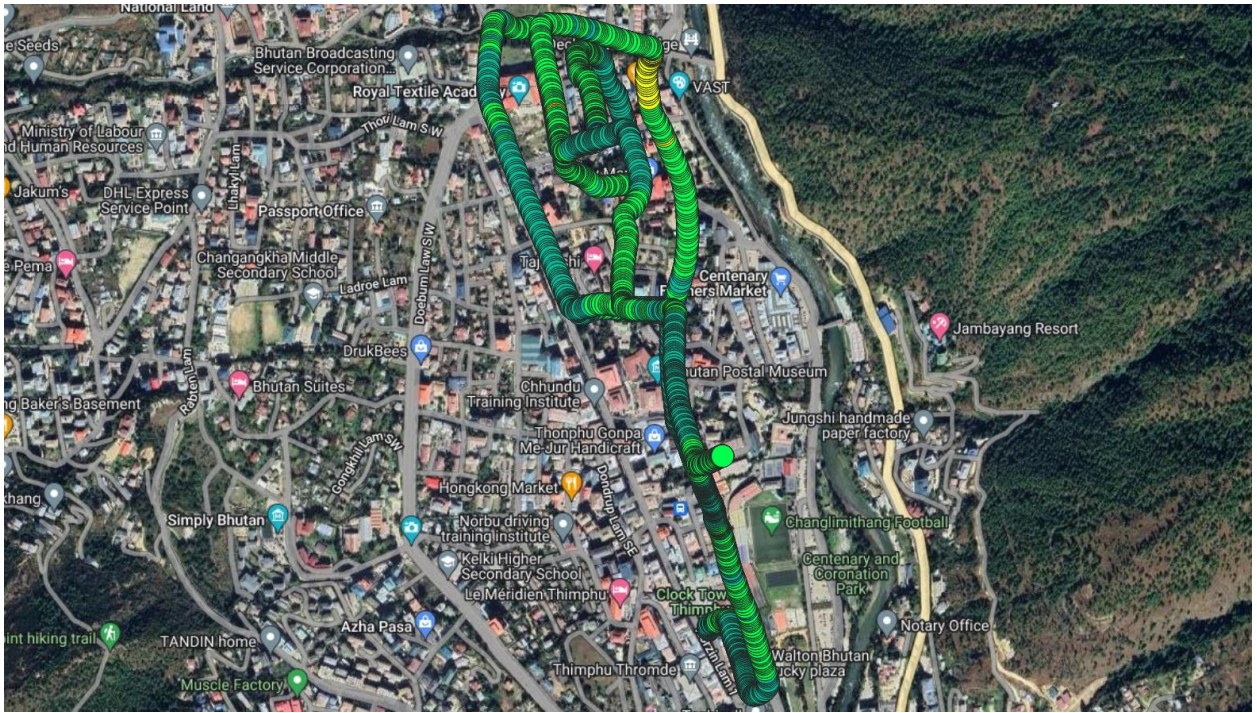


Figure number 20.1: RSRP plot 4G B-mobile (QGIS) [Lower Town]



*Figure number 20.2: RSRP plot 4G Tashi cell (QGIS) [Lower Town]*

## 21. Upper Town

- *Mobile Voice Service*

Operator	Call Drop rate (<2%)	Mean Opinion Score (>= 3.5)	Call Fallback Setup Time (<= 9 Seconds)	Remarks
BTL	0	3.87	6.89	No issue
TICL	0	3.76	7.68	No issue

- *Data Throughputs (Mbps) (4G)*

Operators	File Transfer Protocol		Remarks
	Download (≥ 6 Mbps)	Upload (≥ 2 Mbps)	
<b>BTL</b>	14.68	16.53	No issue
<b>TICL</b>	16.35	15.61	No issue

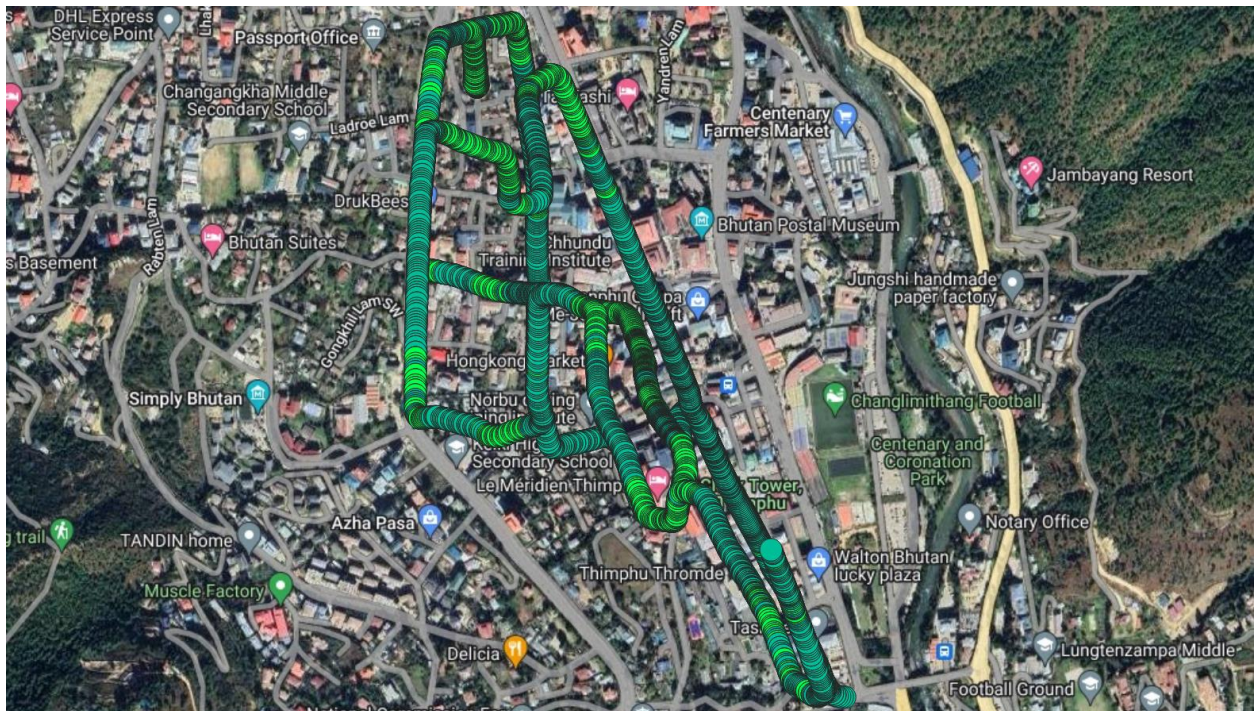


Figure number 21.1: RSRP plot 4G B-mobile (QGIS) [Upper Town]



*Figure number 21.2: RSRP plot 4G Tashi cell (QGIS) [Upper Town]*

## 22. Vegetable Market

- *Mobile Voice Service*

Operator	Call Drop rate (<2%)	Mean Opinion Score (>= 3.5)	Call Fallback Setup Time (<= 9 Seconds)	Remarks
BTL	0	3.91	6.41	No issue
TICL	0	3.82	6.78	No issue

- *Data Throughputs (Mbps) (4G)*

Operato rs	File Transfer Protocol		Remarks
	Download ( $\geq 6$ Mbps)	Upload ( $\geq 2$ Mbps)	
<b>BTL</b>	25.66	21.35	No issue
<b>TICL</b>	22.85	18.47	No issue

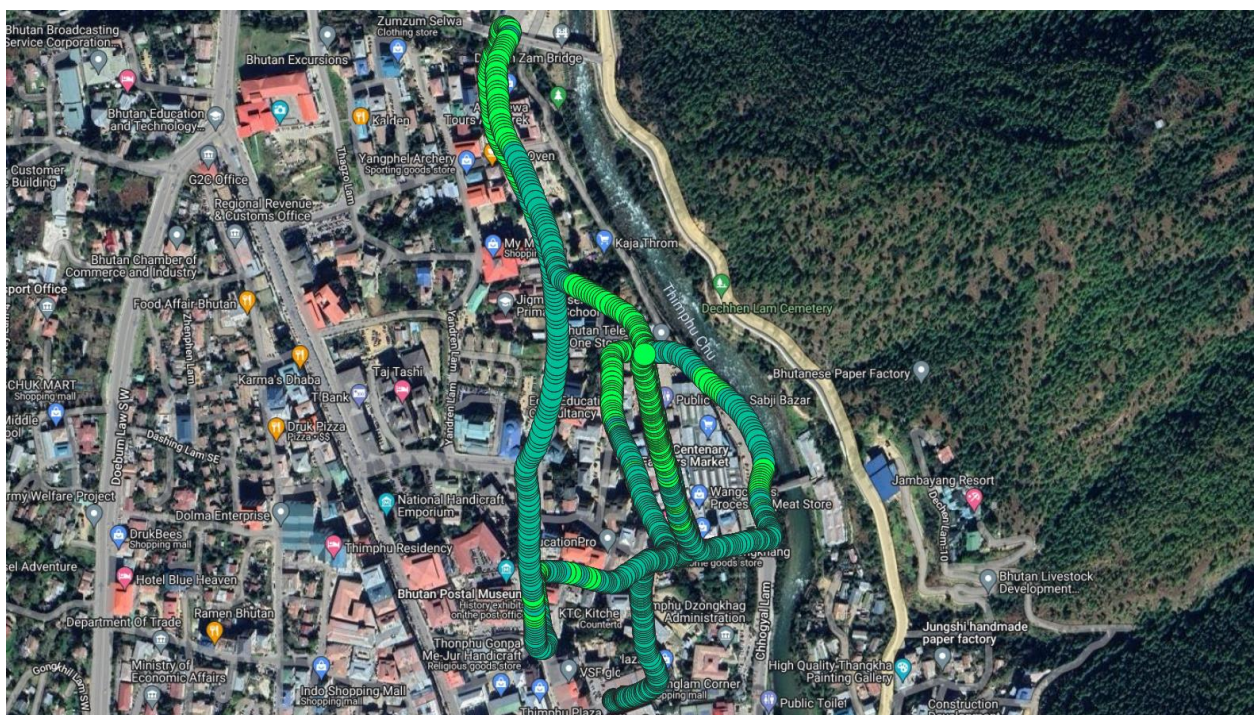


Figure number 22.1: RSRP plot 4G B-mobile (QGIS) [Vegetable Market]



### 23. Kaja Throm

- *Mobile Voice Service*

Operator	Call Drop rate (<2%)	Mean Opinion Score (≥ 3.5)	Call Fallback Setup Time (≤ 9 Seconds)	Remarks
BTL	0	3.75	5.88	No issue
TICL	0	3.76	6.11	No issue

- *Data Throughputs (Mbps) (4G)*

Operators	File Transfer Protocol		Remarks
	Download (≥ 6 Mbps)	Upload (≥ 2 Mbps)	
BTL	28.25	23.16	No issue
TICL	12.29	14.4	No issue

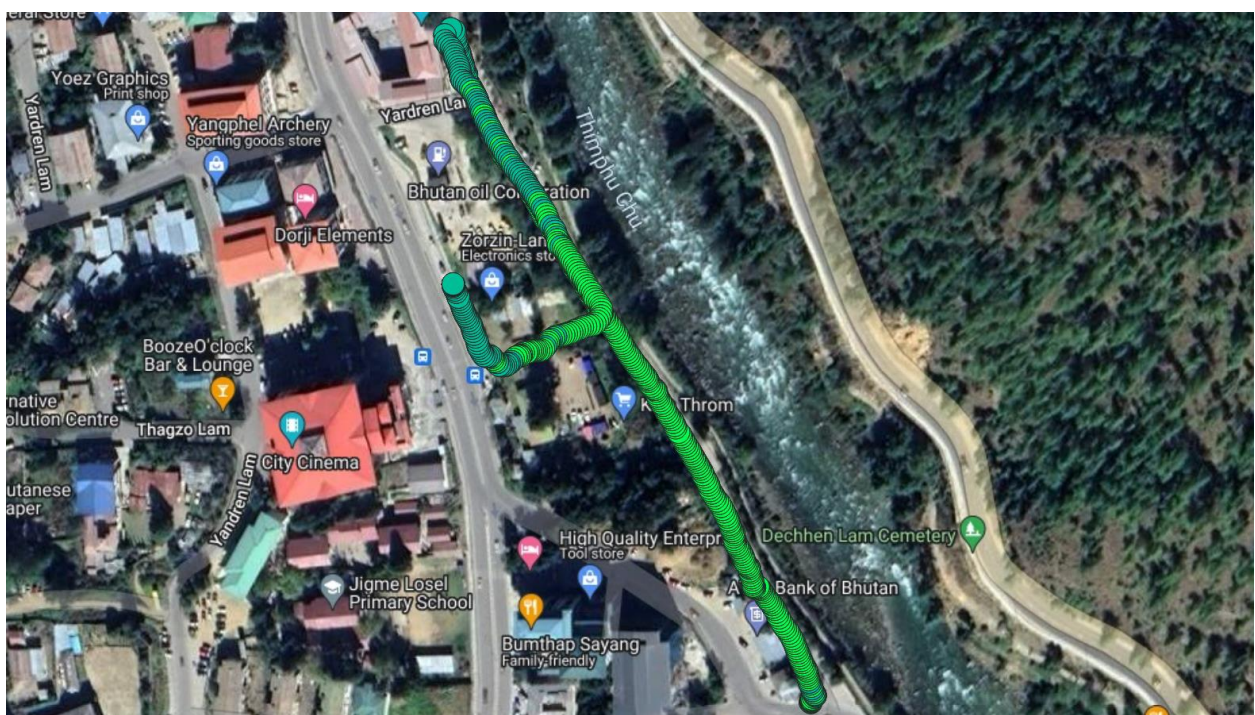


Figure number 23.1: RSRP plot 4G B-mobile (QGIS) [Kaja Throm]

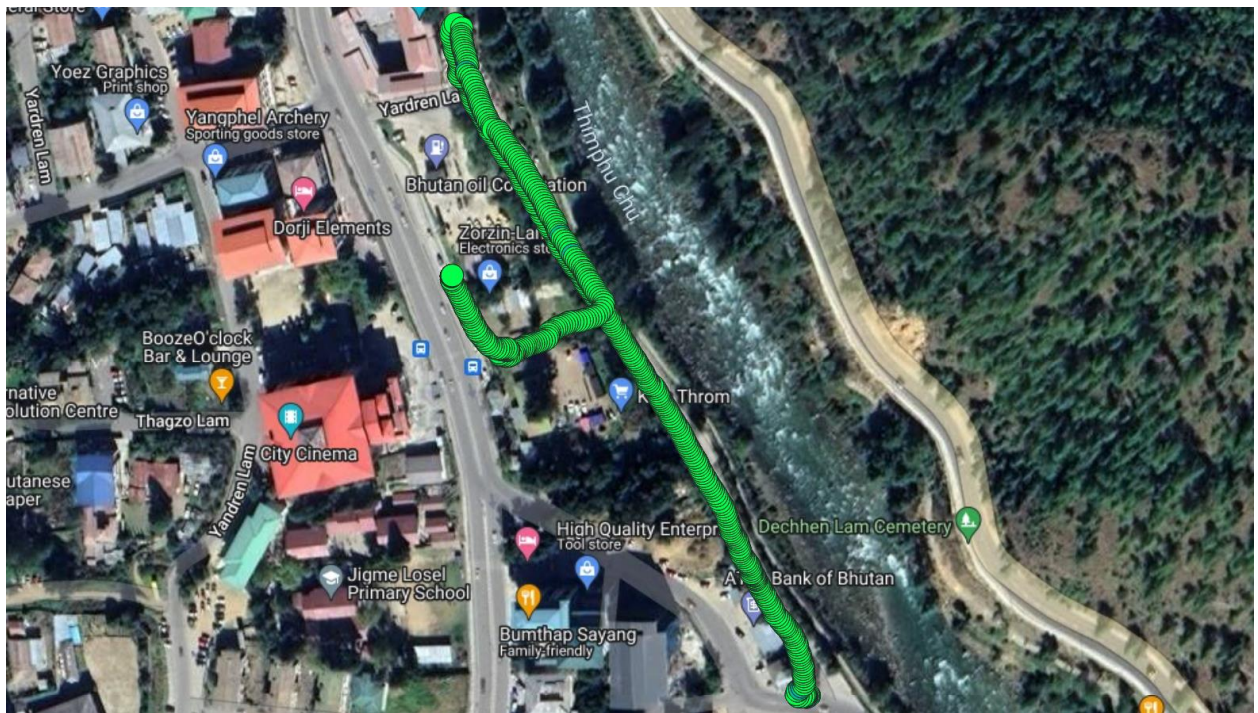


Figure number 23.2: RSRP plot 4G Tashi cell (QGIS) [Kaja Throm]

## 24. Changbandu

- *Mobile Voice Service*

Operator	Call Drop rate (<2%)	Mean Opinion Score (>= 3.5)	Call Fallback Setup Time (<= 9 Seconds)	Remarks
BTL	0	3.79	7.00	No issue
TICL	0	3.99	6.5	No issue

- *Data Throughputs (Mbps) (4G)*

Operators	File Transfer Protocol		Remarks
	Download (≥ 6 Mbps)	Upload (≥ 2 Mbps)	
BTL	9.54	16.11	No issue
TICL	10.97	14.14	No issue



Figure number 24.1: RSRP plot 4G B-mobile (QGIS) [Changbandu]

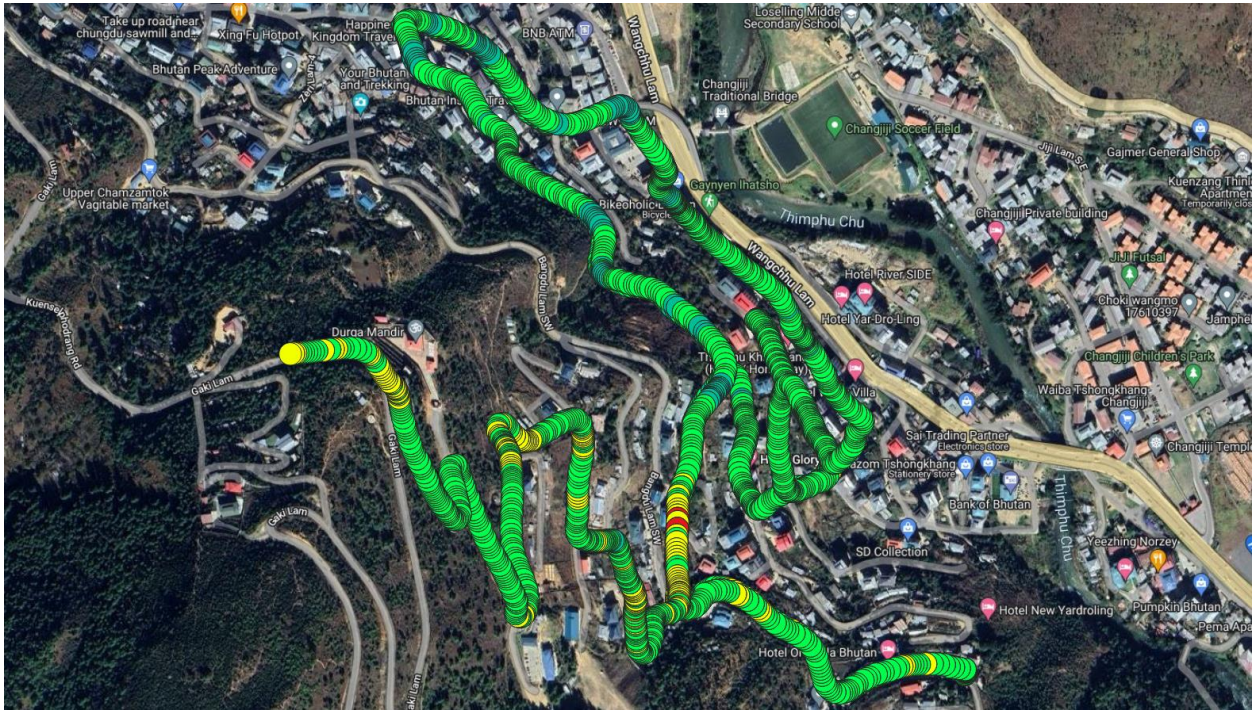


Figure number 24.2: RSRP plot 4G Tashi cell (QGIS) [Changbandu]

## 25. Changzamtog

- *Mobile Voice Service*

Operator	Call Drop rate (<2%)	Mean Opinion Score (>= 3.5)	Call Fallback Setup Time (<= 9 Seconds)	Remarks
BTL	0	3.87	7.26	No issue
TICL	0	3.97	6.03	No issue

- *Data Throughputs (Mbps) (4G)*

Operators	File Transfer Protocol		Remarks
	Download (≥ 6 Mbps)	Upload (≥ 2 Mbps)	
BTL	24.3	16.82	No issue
TICL	14.04	21.06	No issue

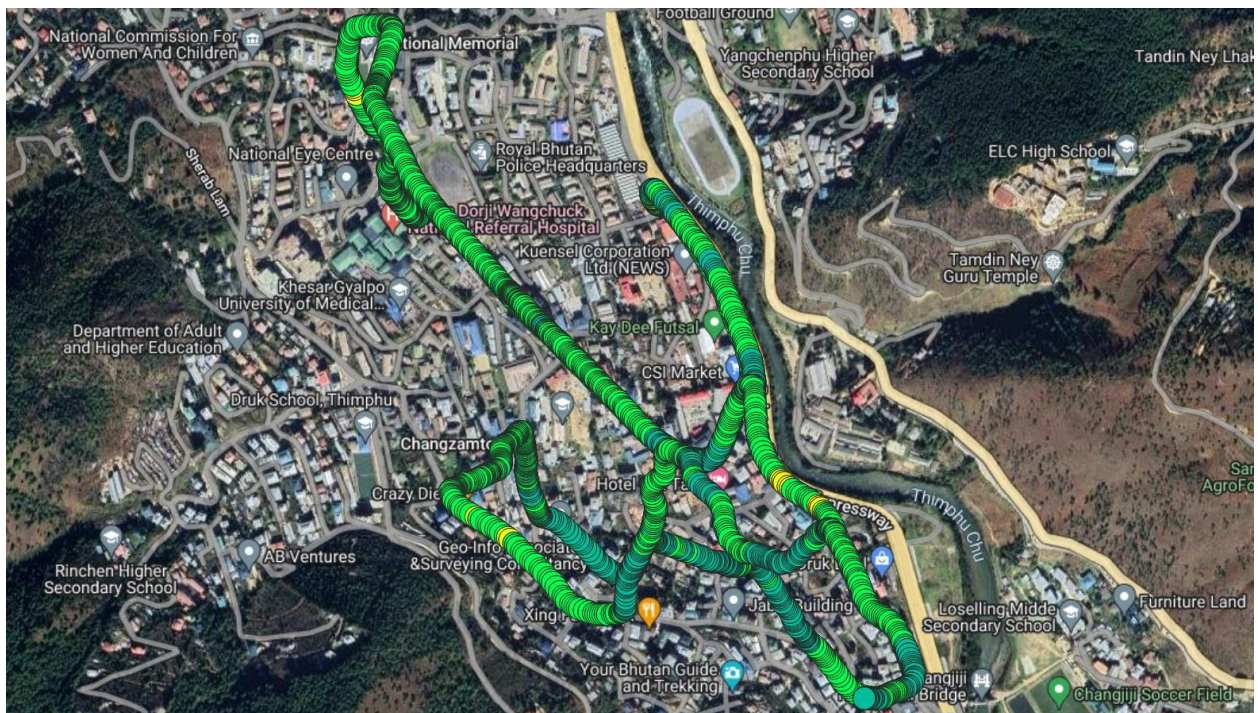


Figure number 25.1: RSRP plot 4G B-mobile (QGIS) [Changzamtog]



*Figure number 25.2: RSRP plot 4G Tashi cell (QGIS) [Changzamtog]*

## 26. NPPF Colony

- **Mobile Voice Service**

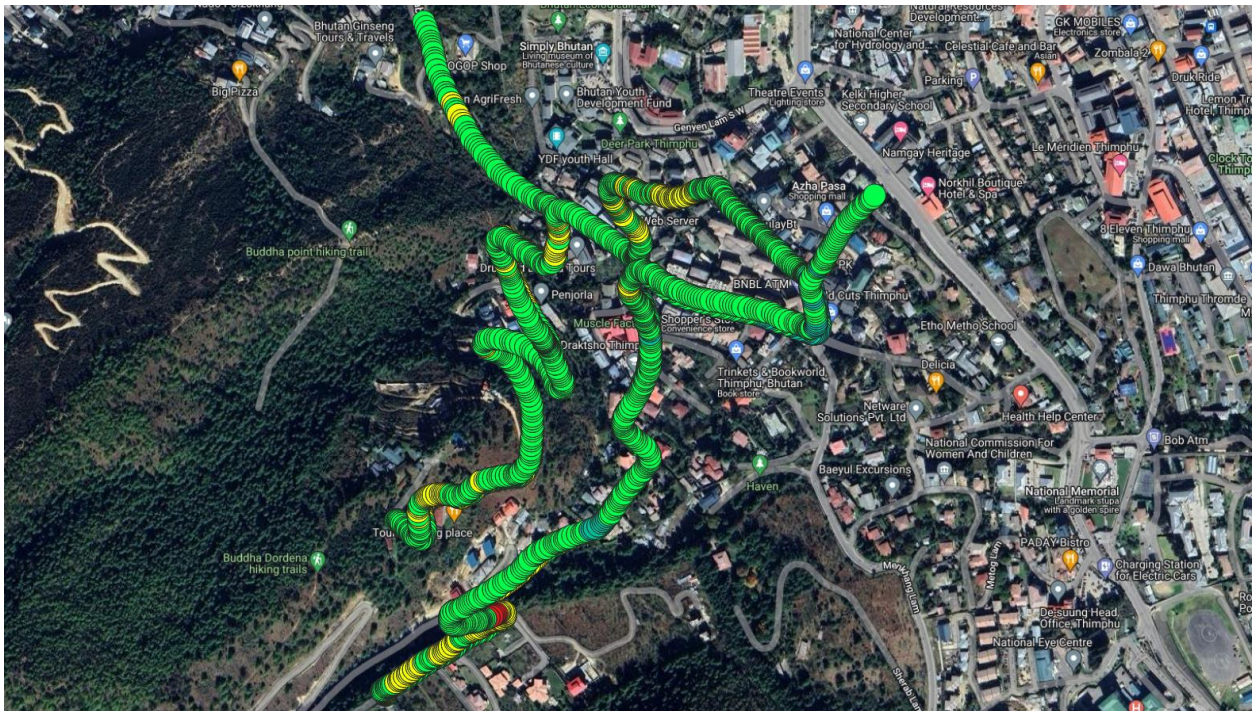
Operator	Call Drop rate (<2%)	Mean Opinion Score (>= 3.5)	Call Fallback Setup Time (<= 9 Seconds)	Remarks
BTL	0	3.82	6.46	No issue
TICL	0	3.88	6.52	No issue

- **Data Throughputs (Mbps) (4G)**

Operators	File Transfer Protocol		Remarks
	Download (≥ 6 Mbps)	Upload (≥ 2 Mbps)	
BTL	31.81	12.48	No issue
TICL	23.34	17.98	No issue



Figure number 26.1: RSRP plot 4G B-mobile (QGIS) [NPPF Colony]



## 27. Changangkha (Housing, CMSS and RKPS)

- **Mobile Voice Service**

Operator	Call Drop rate (<2%)	Mean Opinion Score (>= 3.5)	Call Fallback Setup Time (<= 9 Seconds)	Remarks
BTL	0	3.86	6.84	No issue
TICL	0	3.91	8.38	No issue

- **Data Throughputs (Mbps) (4G)**

Operator	File Transfer Protocol		Remarks
	Download (≥ 6 Mbps)	Upload (≥ 2 Mbps)	
BTL	23.87	15.86	No issue
TICL	26.73	15.31	No issue

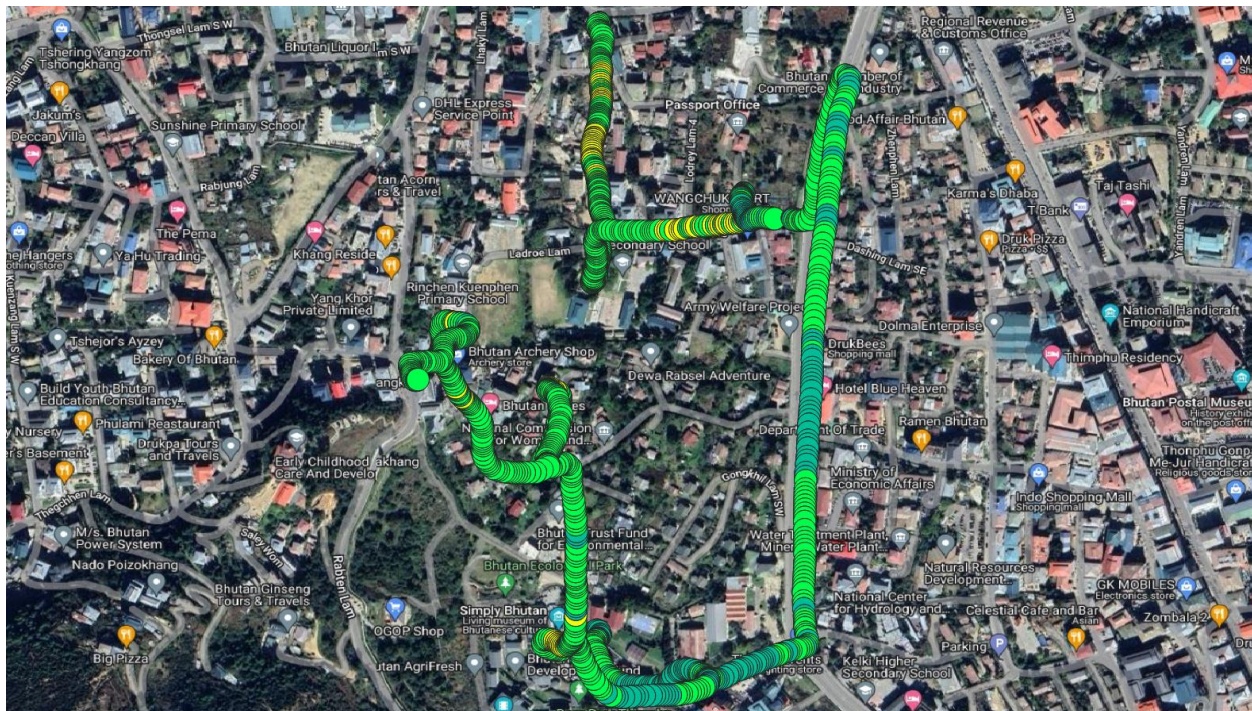
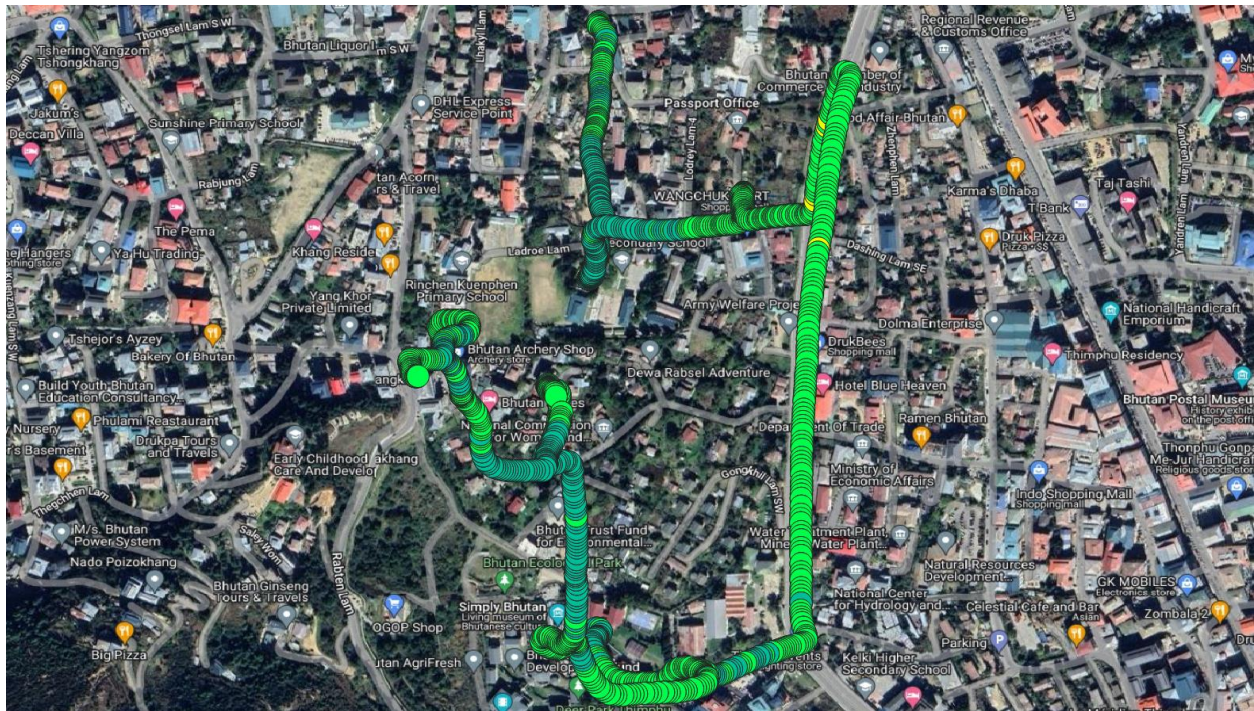


Figure number 27.1: RSRP plot 4G B-mobile (QGIS) [Changangkha (Housing, CMSS and RKPS)]



*Figure number 27.2: RSRP plot 4G Tashi cell (QGIS) [Changangkha (Housing, CMSS and RKPS)]*

## 28. Lower Motithang

- *Mobile Voice Service*

Operator	Call Drop rate (<2%)	Mean Opinion Score (>= 3.5)	Call Fallback Setup Time (<= 9 Seconds)	Remarks
BTL	0	3.79	6.6	No issue
TICL	0	4.03	6.82	No issue

- *Data Throughputs (Mbps) (4G)*

Operators	File Transfer Protocol		Remarks
	Download (≥ 6 Mbps)	Upload (≥ 2 Mbps)	
BTL	28.01	16.63	No issue
TICL	29.16	22.69	No issue



Figure number 28.1: RSRP plot 4G B-mobile (QGIS) [Lower Motithang]



*Figure number 28.2: RSRP plot 4G Tashi cell (QGIS) [Lower Motithang]*

## 29. Ministers' Colony (including the road above MHSS)

- **Mobile Voice Service**

Operator	Call Drop rate (<2%)	Mean Opinion Score (>= 3.5)	Call Fallback Setup Time (<= 9 Seconds)	Remarks
BTL	0	3.87	6.04	No issue
TICL	0	4.03	6.61	No issue

- **Data Throughputs (Mbps) (4G)**

Operators	File Transfer Protocol		Remarks
	Download (≥ 6 Mbps)	Upload (≥ 2 Mbps)	
BTL	28.82	21.25	No issue
TICL	34.58	22.44	No issue



Figure number 29.1: RSRP plot 4G B-mobile (QGIS) [Ministers' Colony (including the road above MHSS)]



Figure number 29.2: RSRP plot 4G Tashi cell (QGIS) [Ministers' Colony (including the road above MHSS)]

### 30. MoIC (including ministry areas, BTL and Kawajangsa)

- **Mobile Voice Service**

Operator	Call Drop rate (<2%)	Mean Opinion Score (>= 3.5)	Call Fallback Setup Time (<= 9 Seconds)	Remarks
BTL	0	3.86	6.04	No issue
TICL	0	4	7.59	No issue

- **Data Throughputs (Mbps) (4G)**

Operators	File Transfer Protocol		Remarks
	Download (≥ 6 Mbps)	Upload (≥ 2 Mbps)	
BTL	24.02	34.38	No issue
TICL	29.13	18.55	No issue



Figure number 30.1: RSRP plot 4G B-mobile (QGIS) [MoIC (including ministry areas, BTL and Kawajangsa)]



### 31. Sangaygang (RITH, Motithang Takin Preserve)

- *Mobile Voice Service*

Operator	Call Drop rate (<2%)	Mean Opinion Score (>= 3.5)	Call Fallback Setup Time (<= 9 Seconds)	Remarks
BTL	0	3.82	6.27	No issue
TICL	0	3.61	7.86	No issue

- *Data Throughputs (Mbps) (4G)*

Operators	File Transfer Protocol		Remarks
	Download (≥ 6 Mbps)	Upload (≥ 2 Mbps)	
<b>BTL</b>	24.14	16.34	No issue
<b>TICL</b>	34.46	13.17	No issue



Figure number 31.1: RSRP plot 4G B-mobile (QGIS) [Sangaygang (RITH, Motithang Takin Preserve)]



*Figure number 31.2: RSRP plot 4G Tashi cell (QGIS) [Sangaygang (RITH, Motithang Takin Preserve)]*

.....

### 32. Upper Motithang

- *Mobile Voice Service*

Operator	Call Drop rate (<2%)	Mean Opinion Score (>= 3.5)	Call Fallback Setup Time (<= 9 Seconds)	Remarks
BTL	0	3.89	6.01	No issue
TICL	0	3.62	7.91	No issue

- *Data Throughputs (Mbps) (4G)*

Operators	File Transfer Protocol		Remarks
	Download ( $\geq 6$ Mbps)	Upload ( $\geq 2$ Mbps)	
BTL	41.58	30.89	No issue
TICL	45.64	28.24	No issue

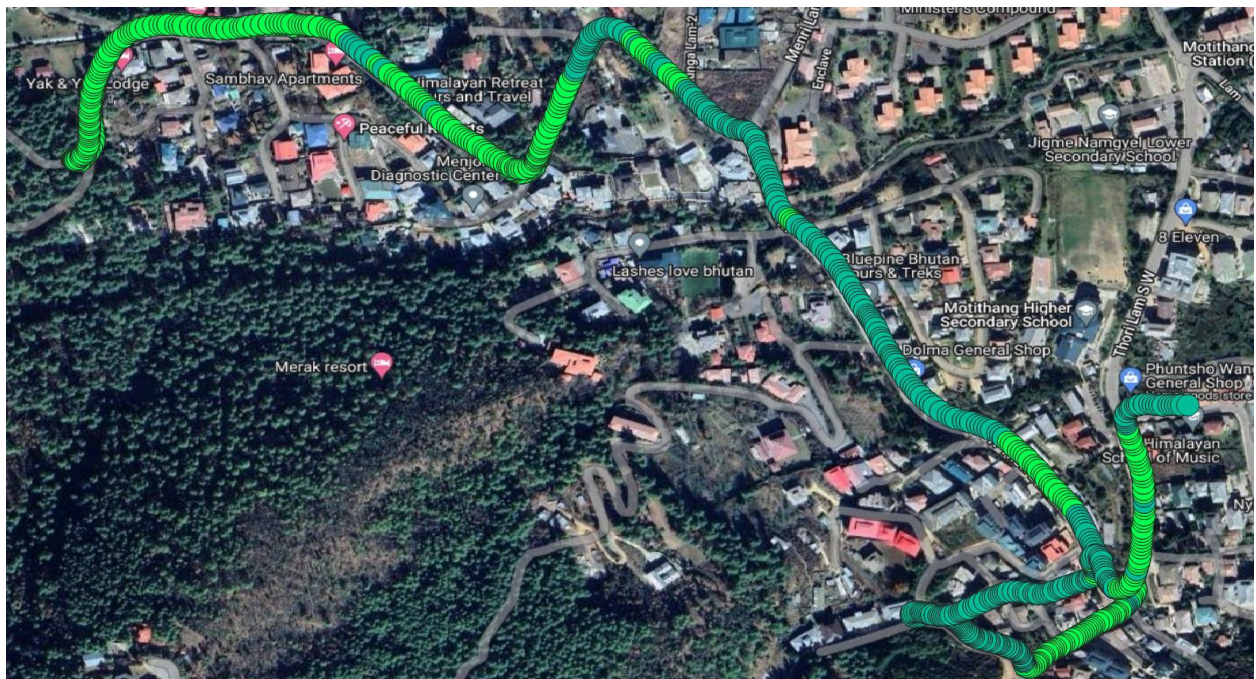


Figure number 31.1: RSRP plot 4G B-mobile (QGIS) [NPPF Colony]



*Figure number 31.2: RSRP plot 4G Tashi cell (QGIS) [NPPF Colony]*

### 33. Zilukha - Motithang Highway

- *Mobile Voice Service*

Operator	Call Drop rate (<2%)	Mean Opinion Score (>= 3.5)	Call Fallback Setup Time (<= 9 Seconds)	Remarks
BTL	0	3.85	6.89	No issue
TICL	0	3.96	10.05	Issue with CFBST

- *Data Throughputs (Mbps) (4G)*

Operators	File Transfer Protocol		Remarks
	Download (≥ 6 Mbps)	Upload (≥ 2 Mbps)	
BTL	23.29	21.04	No issue
TICL	15.71	15.64	No issue

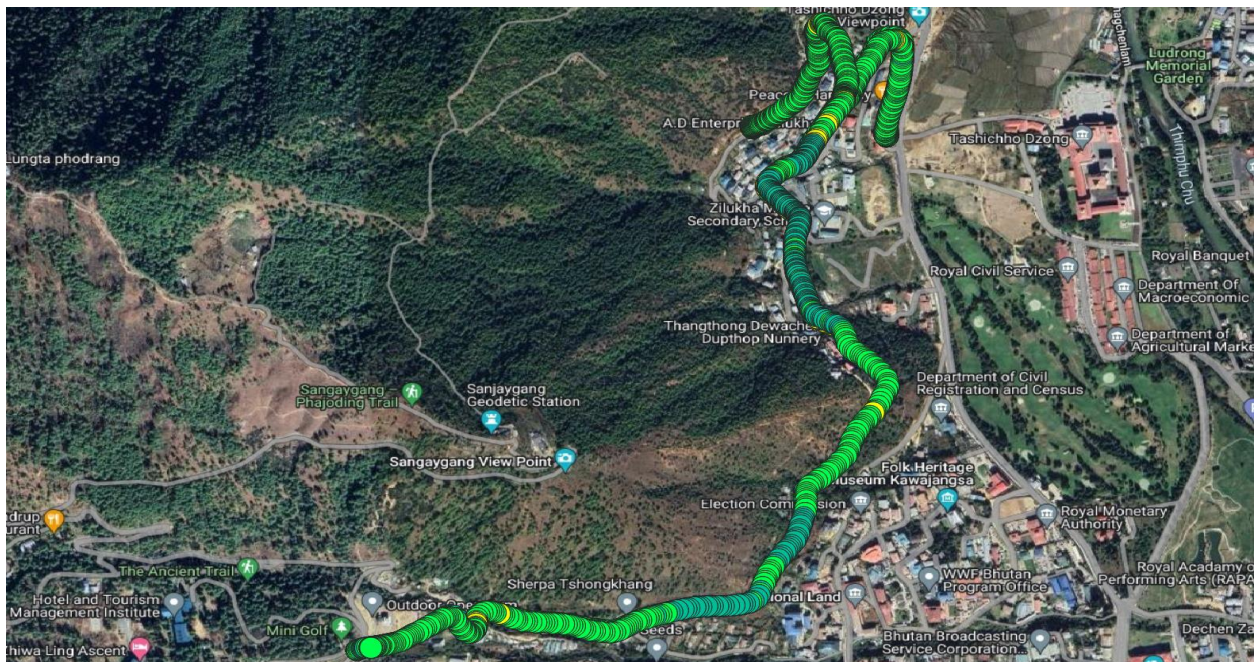
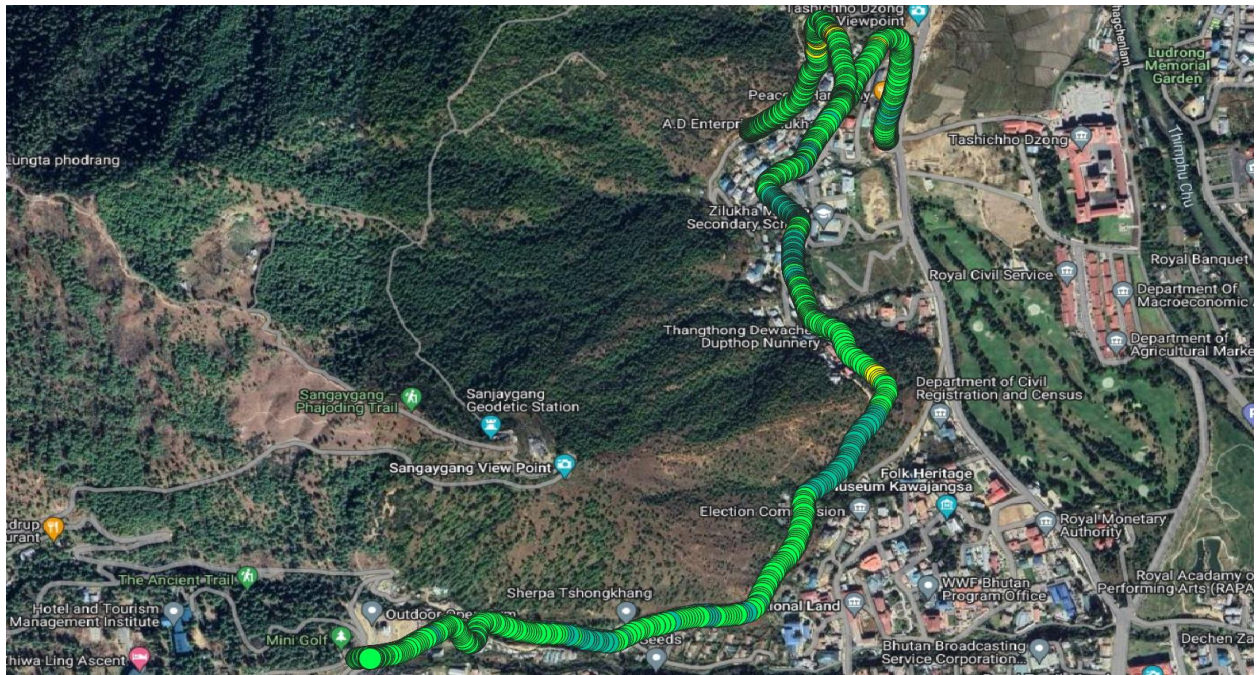


Figure number 26.1: RSRP plot 4G B-mobile (QGIS) [Zilukha - Motithang Highway]



*Figure number 26.2: RSRP plot 4G Tashi cell (QGIS) [Zilukha - Motithang Highway]*

### C. Findings

1. It is found that 4G data throughputs of both the operators in the monitored areas are meeting the standards except for the following places:

<b>TICL</b>	<b>BTL</b>
Upper Pamtsho 1 (Download)	Hejo (Download)
YHSS area (Download)	YHSS area (Download)

2. The call fallback setup time for both the operators in all the monitored places are meeting the standards except for the following places:

<b>TICL</b>	<b>BTL</b>
Bhutan kitchen and Village Restaurant area	Old Highway Babesa
Upper Pamtsho 1	
Lower Taba	
YHSS area	
Zilukha - Motithang Highway	

3. The Mean Opinion Score for both the operators in all the monitored places are meeting the standards except for *Upper Pamtsho 1* for BTL.
4. There are no issues of Call drop for both the operators, at all monitored places.